

NOTE:
 1. THE CONTRACTOR MUST VERIFY ALL DIMENSIONS IN THE FIELD PRIOR TO ORDERING AND INSTALLATION.
 2. DOORS SLABS AND FRMASE TO BE REPLACED FOLLOWING THE PROPOSED HARDWARE SET



PLATO
MARINAKOS, JR.
ARCHITECT, LLC

www.plato-studio.com

1617 JFK BLVD
 20th Floor
 Philadelphia, PA 19103
 888-312-5369 OFFICE
 267-866-0931 DIRECT
 plato@plato-studio.com

ISSUED FOR BIDDING
5/31/24

ARCHITECT SEAL MUST BE IN RED INK
 OWNER
Vision Academy Charter School

ONE CALL #:



Know what's below.
 Call before you dig.

SITE SAFETY

It is the responsibility of the general contractor and/or the contractor listed as the licensed entity on the building permit per the municipality to ensure all site safety requirements are in place and followed, prior to, during, and after the commencement of the construction process until they are 100% complete and have received a building certificate of occupancy by governing agencies. They are also responsible for any unsafe conditions caused by or related to their sub-contractors' work. Plato Marinakos, Architect LLC, and their professional consultants (associated with these documents) are not responsible for means and methods of construction, and/or site safety, including, but not limited to, osha construction safety requirements, standard construction, job-site safety, job-site safety training of workers, safe work site organization, safety direction and/or safety engineering of required safety elements. It is the sole responsibility of the licensed contractor to ensure that all site safety measures are in accordance with the governing authorities. Please refer to OSHA website (www.osha.gov) for additional training and information requirements for site safety compliance.

REV	DATE	DESCRIPTION

APPROVAL STAMP

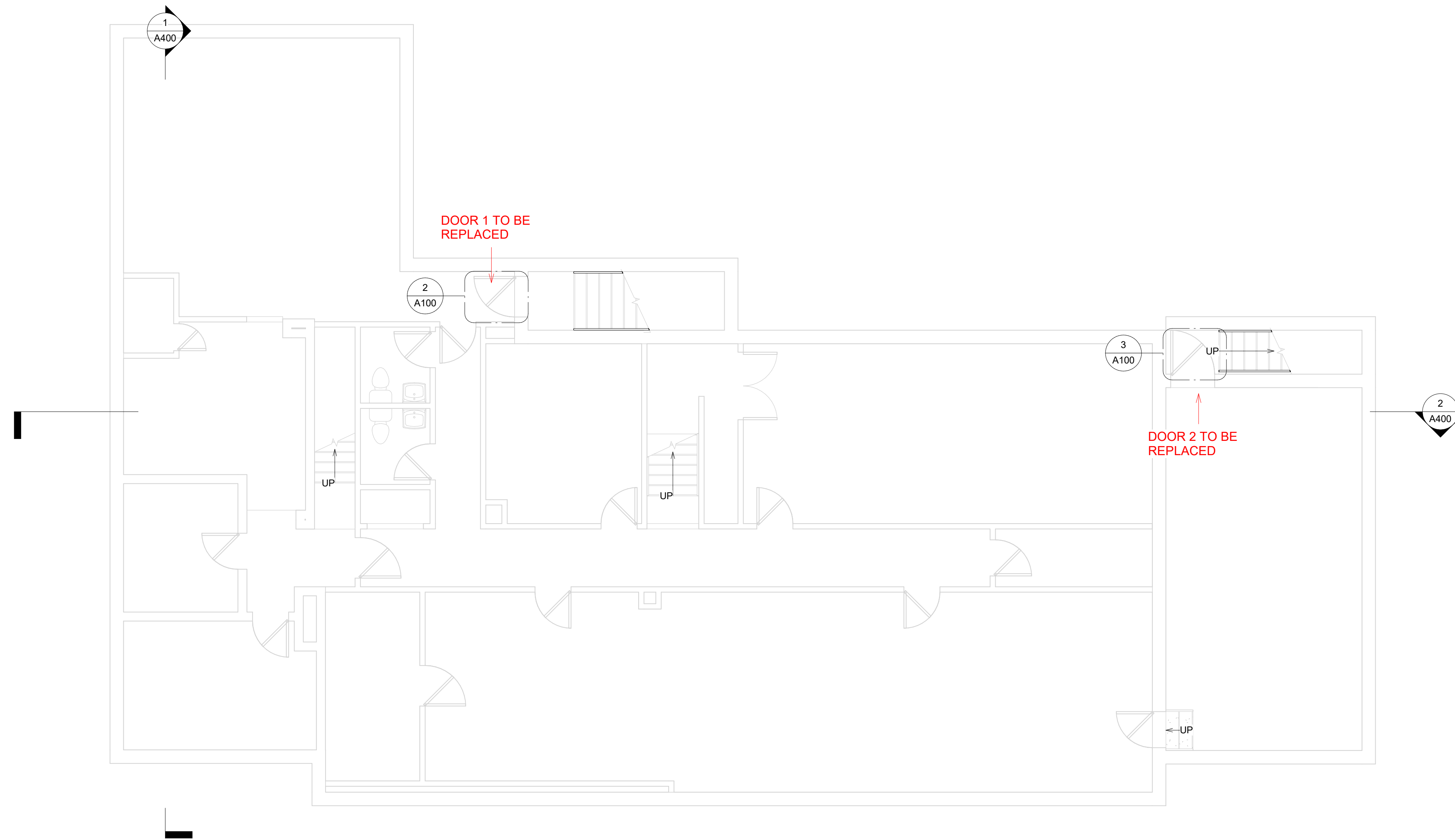
716 EMERSON AVE - RECTORY

FLOOR PLANS

Project number _____ Project Number _____
 Date _____ 5/31/24
 Drawn by _____ Author _____
 Checked by _____ Checker _____

A100

Scale _____ As indicated



1 EXISTING BASEMENT
 A100 SCALE: 3/16" = 1'-0"



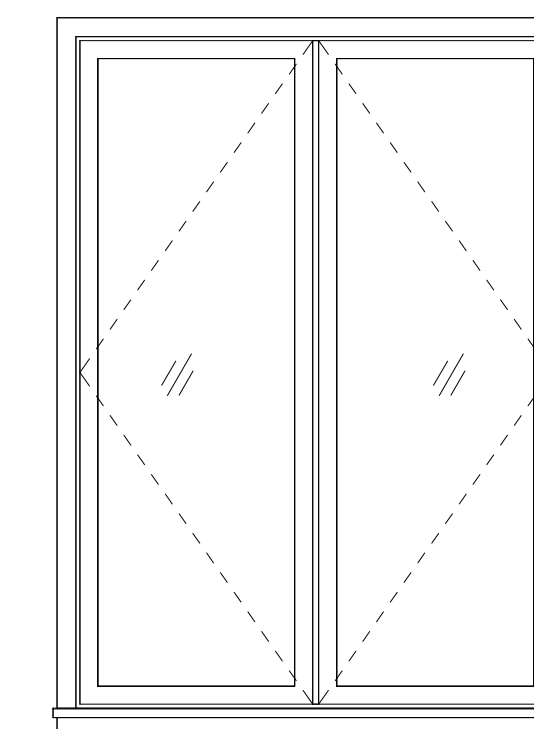
2 DOOR 1
 A100 N.T.S.



3 DOOR 2
 A100 SCALE: 1" = 1'-0"

DOOR SCHEDULE1				
MARK	Level	PANEL		HARDWARE SET
		WIDTH	HEIGHT	
DOOR 1	BASEMENT	3'-0"	6'-8"	1
DOOR 2	BASEMENT	3'-3"	6'-8"	1
1: 2				
DOOR 3	FIRST FLOOR	3'-0"	6'-8"	1
1: 1				
DOOR 4	FIRST FLOOR	3'-0"	7'-0"	2
2: 1				
DOOR 5	FIRST FLOOR	5'-8"	7'-0"	3
3: 1				
DOOR 10	FIRST FLOOR	5'-0"	7'-0"	4
DOOR 9	FIRST FLOOR	5'-0"	7'-0"	4
4: 2				
GRAND TOTAL: 7				

WINDOW SCHEDULE				
NUMBER	TYPE	UNIT DIMENSIONS		REMARKS
		HEIGHT	WIDTH	
1	D	7'-0"	5'-0"	NEW WINDOW
2	D	7'-0"	5'-0"	NEW WINDOW
GRAND TOTAL: 2				



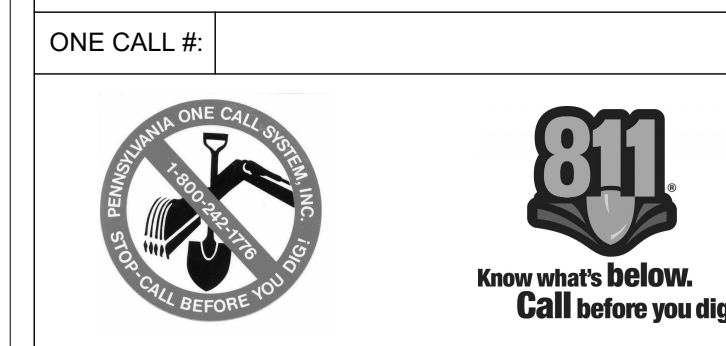
D
 AWNING DOUBLE

WINDOW TYPES
 SCALE: 1/2" = 1'-0"

NOTE:
1. THE CONTRACTOR MUST VERIFY ALL DIMENSIONS IN THE FIELD PRIOR TO ORDERING AND INSTALLATION.
2. DOORS SLABS AND FRMASE TO BE REPLACED FOLLOWING THE PROPOSED HARDWARE SET

ISSUED FOR BIDDING
5/31/24

ARCHITECT SEAL MUST BE IN RED INK
OWNER
Vision Academy Charter School



SITE SAFETY
It is the responsibility of the general contractor and/or the contractor listed as the licensed entity on the building permit per the municipality to ensure all site safety requirements are in place and followed, prior to, during, and after the commencement of the construction process until they are 100% complete and have received a building certificate of occupancy by governing agencies. They are also responsible for any unsafe conditions caused by or related to their sub-contractors' work. Plato Marinakos, Architect LLC, and their professional consultants (associated with these documents) are not responsible for means and methods of construction, and/or site safety, including, but not limited to, OSHA construction safety requirements, standard construction, job-site safety, job-site safety training of workers, safe work site organization, safety direction and/or safety engineering of required safety elements. It is the sole responsibility of the licensed contractor to ensure that all site safety measures are in accordance with the governing authorities. Please refer to OSHA website (www.osha.gov) for additional training and information requirements for site safety compliance.

REV	DATE	DESCRIPTION

APPROVAL STAMP

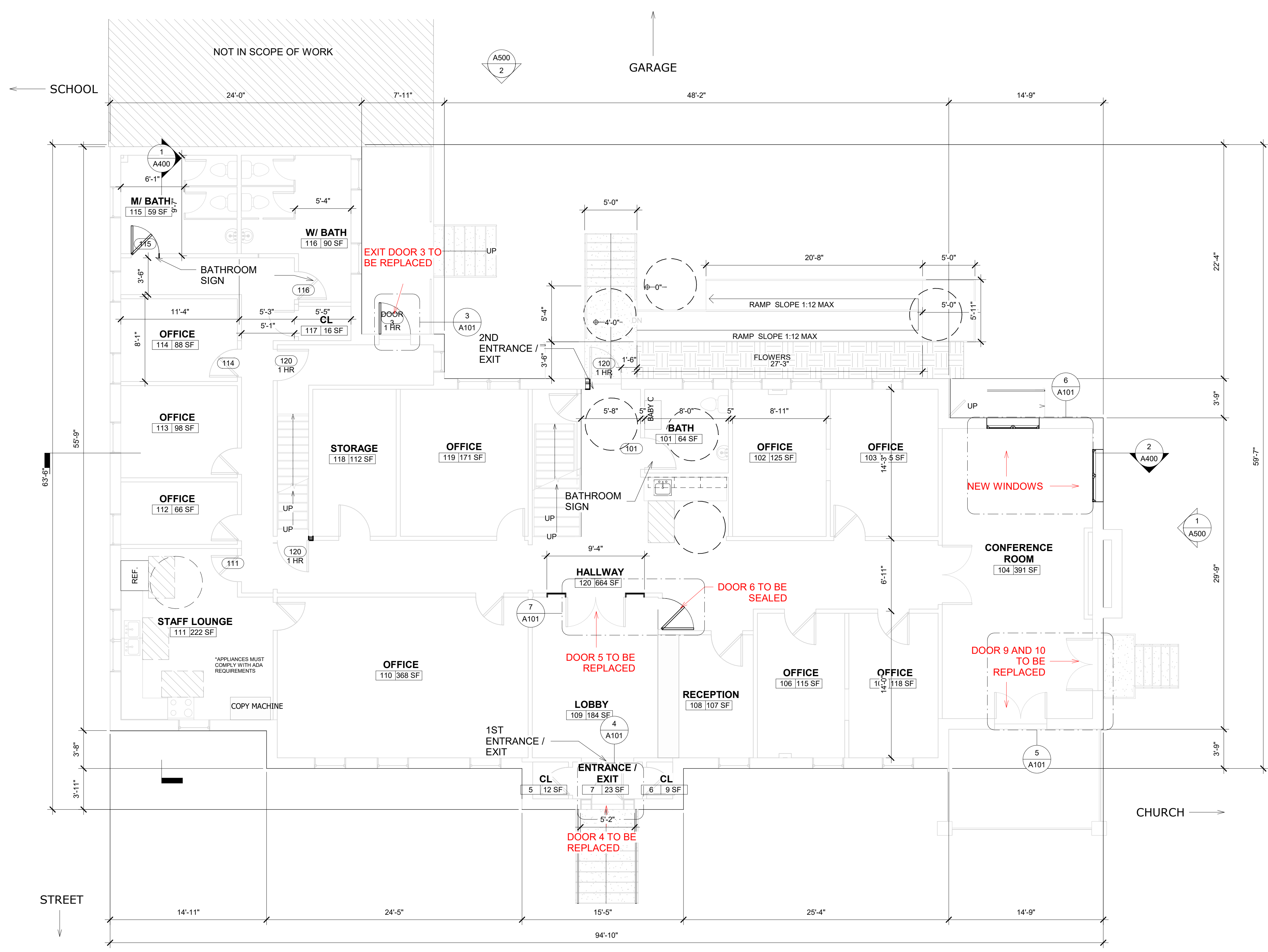
716 EMERSON AVE - RECTORY

FLOOR PLANS

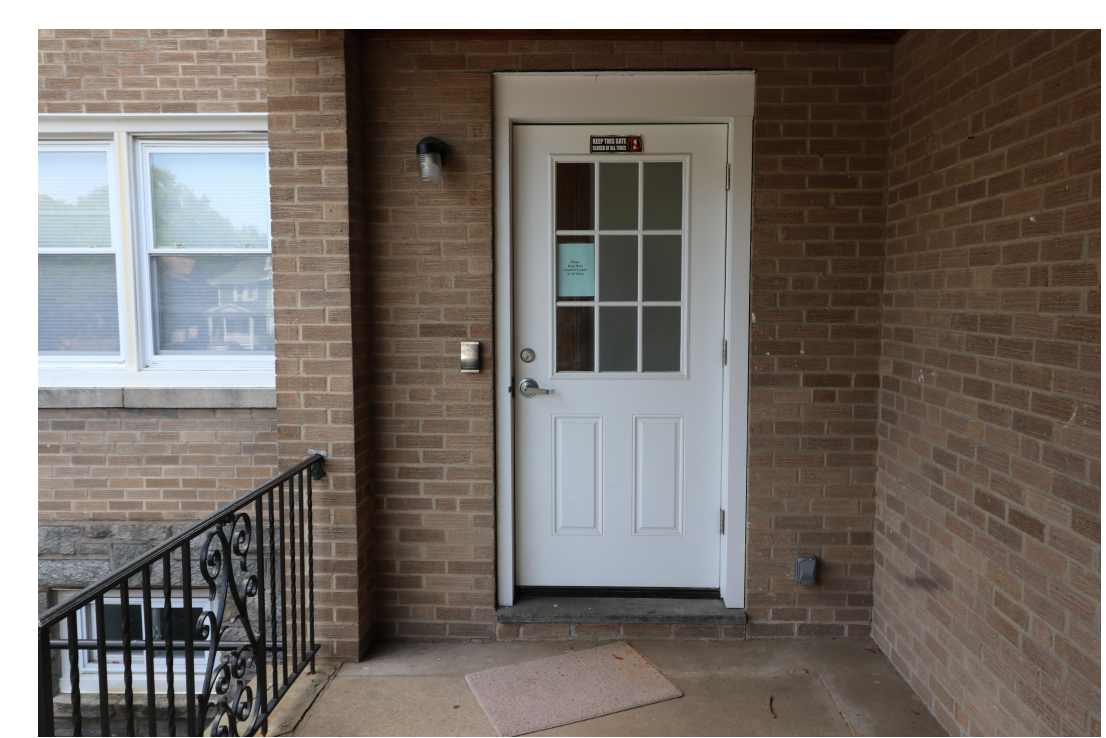
Project number	Project Number
Date	5/31/24
Drawn by	Author
Checked by	Checker

A101

Scale As indicated



1 FIRST FLOOR PLAN
SCALE: 3/16" = 1'-0"



3 DOOR 3
A101 N.T.S.



4 DOOR 4
A101 N.T.S.



7 DOOR 5 AND 6
A101 N.T.S.



5 DOOR 9 AND 10
A101 N.T.S.

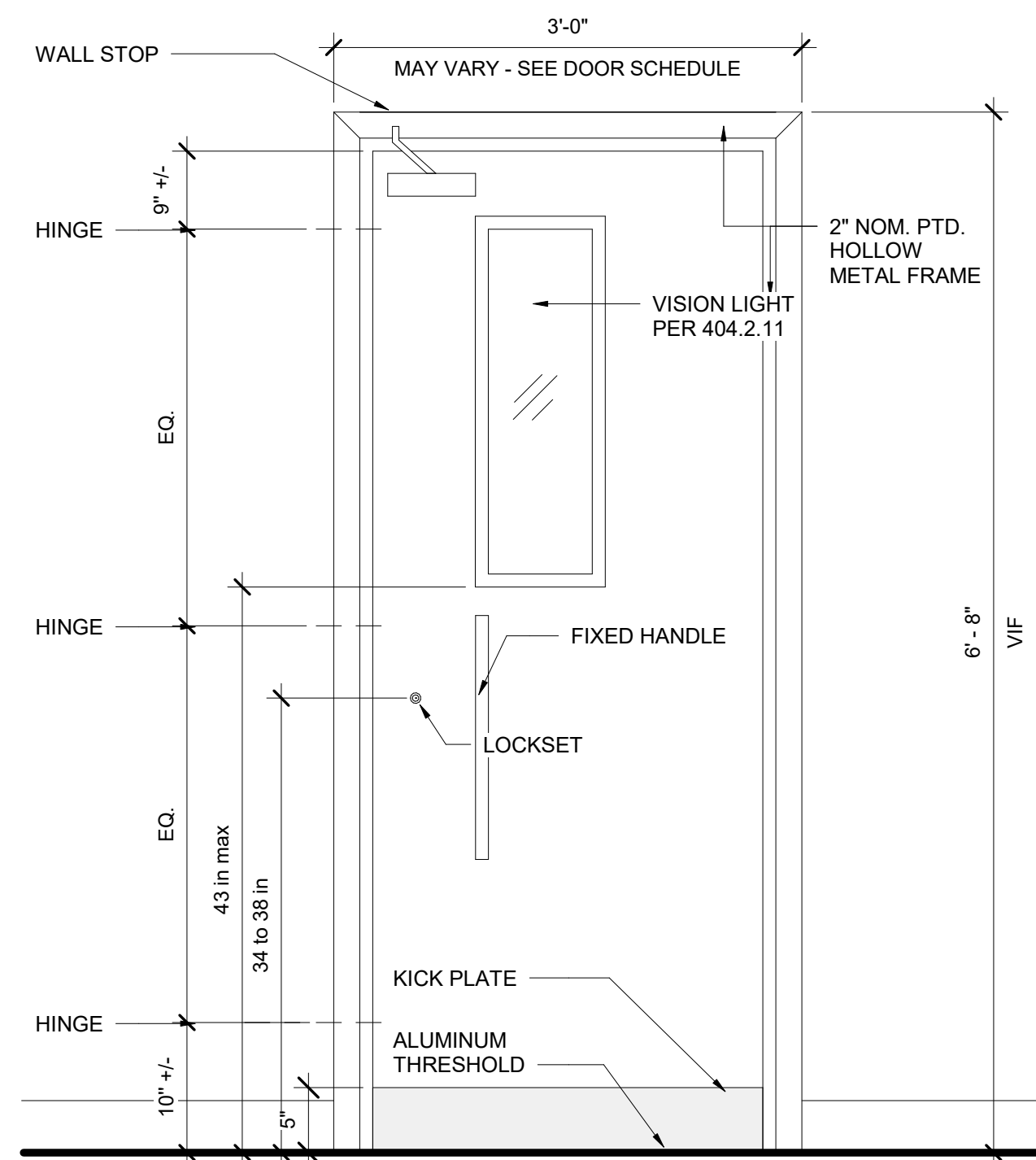


6 WINDOWS 1 AND 2
A101 N.T.S.

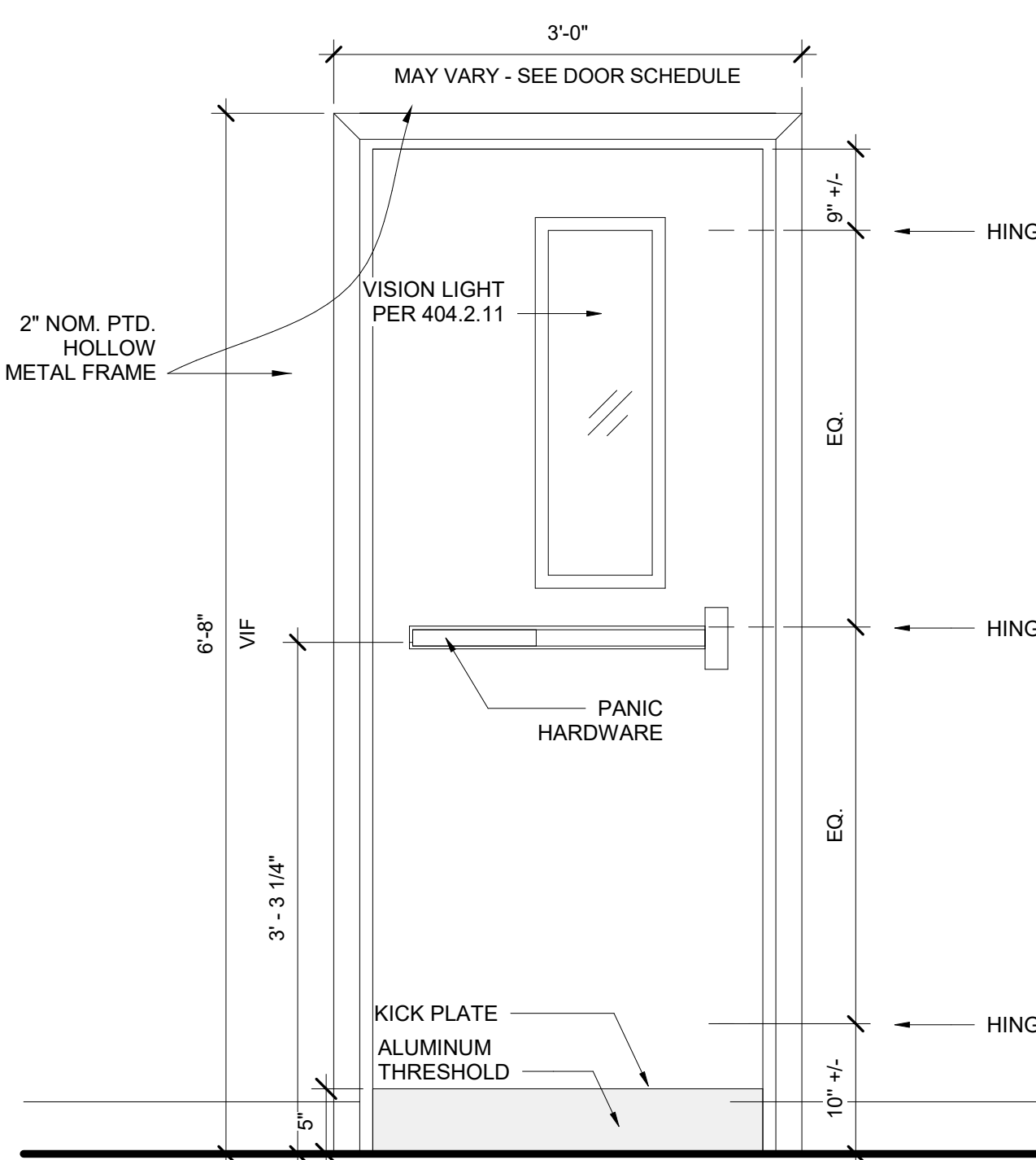
DOOR HARDWARE SET 1

- GENERAL
1. DOOR HUNG TO THE FRAME WITH HINGES
 2. PANIC HARDWARE WITH LOCKSET
 3. THRESHOLD NEEDED
 4. SEALED AND PROTECTED DOOR (1HR RATED)
 5. NOT ELECTRIFIED DOOR
 6. DOOR CLOSER
 7. DOOR MUST BE SEALED

- SPECIFIC CONSIDERATIONS
1. HEAVY FREQUENCY OF USE
 2. EXPOSED TO WEATHER/CLIMATE
 3. MATERIAL: TEMPERED GLASS AND ALUMINIUM
 4. VERIFY DOOR SING DIRECTION ON EXISTING CONDITIONS PLAN



OUTSIDE THE BUILDING

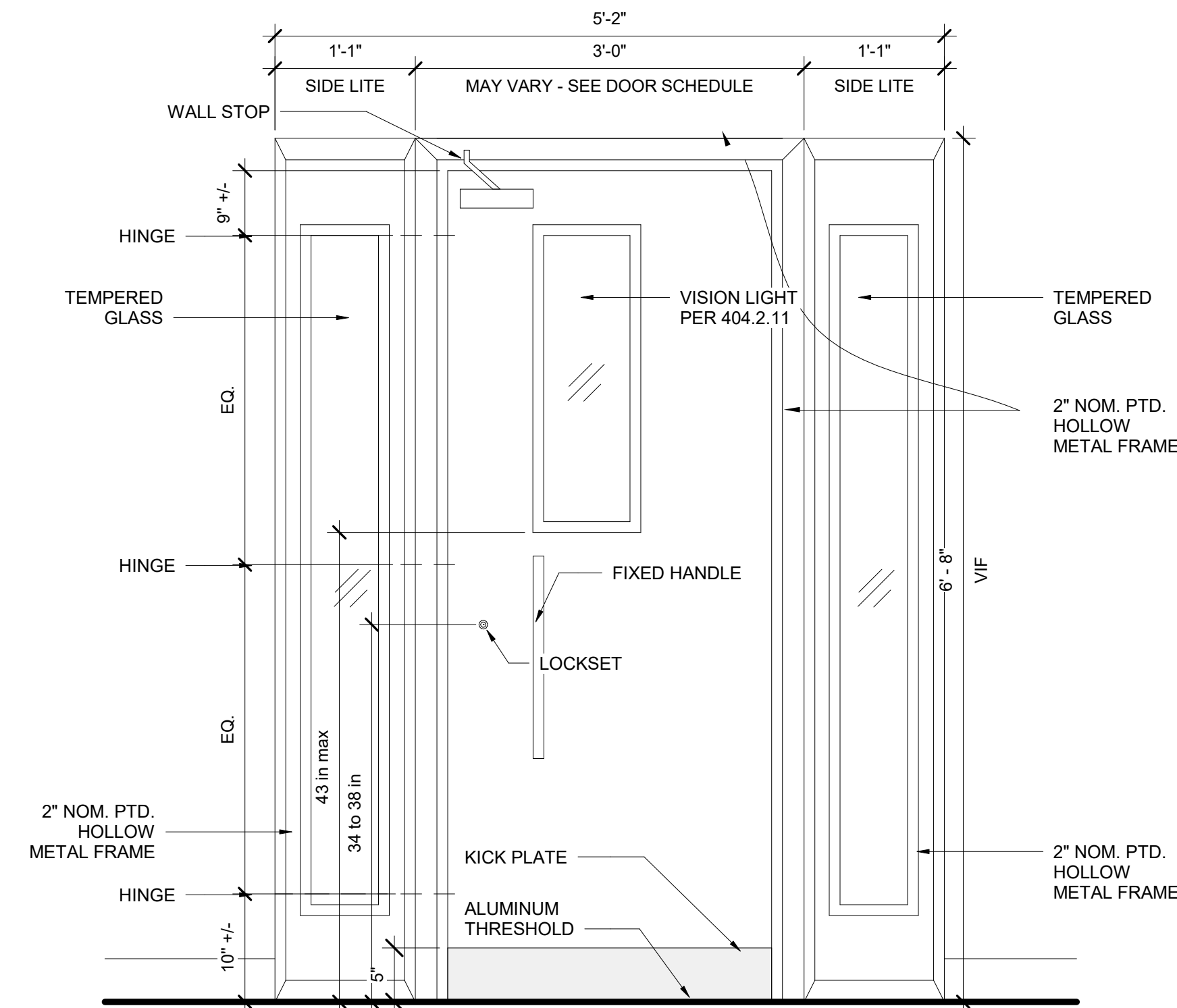


INSIDE THE BUILDING

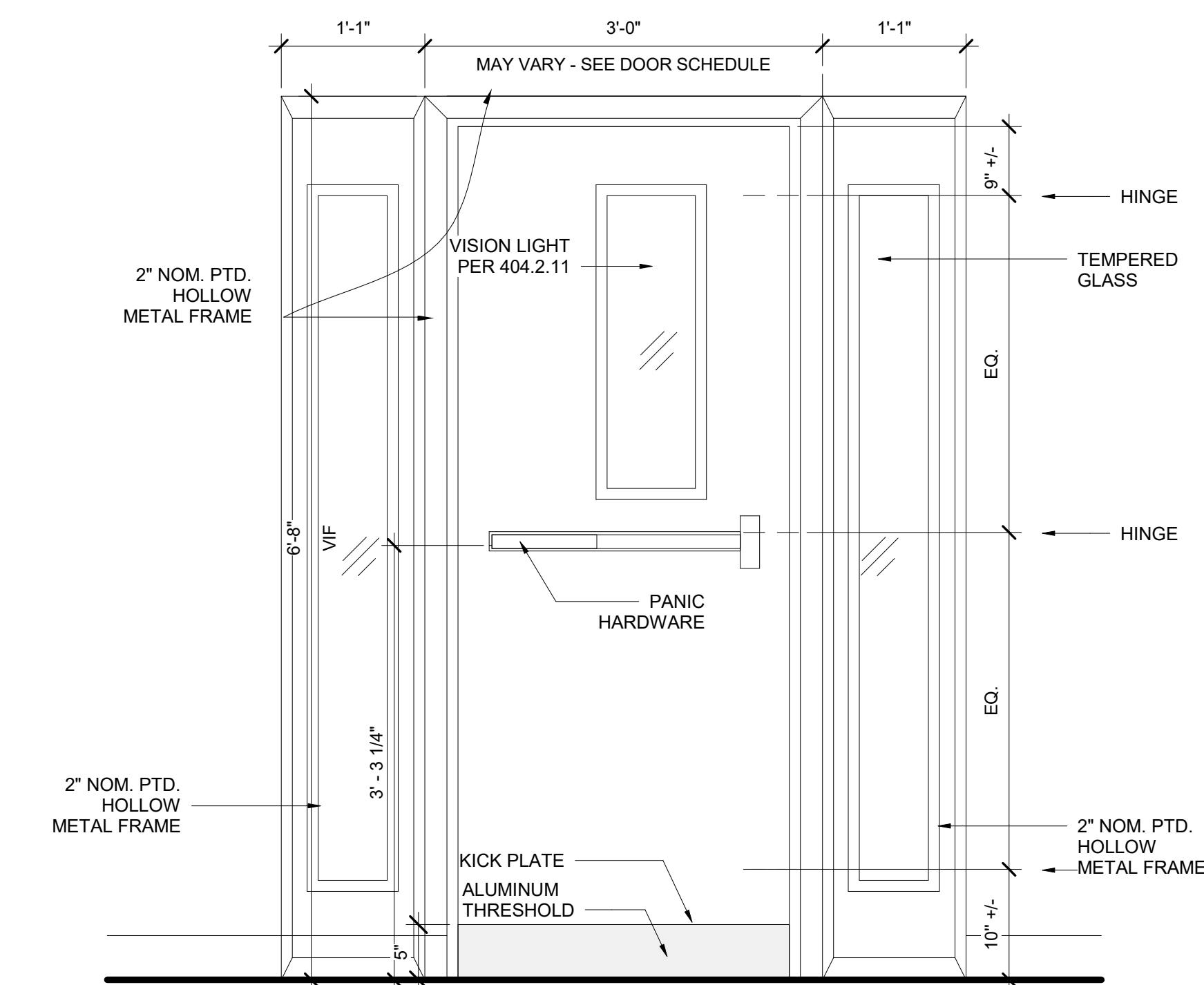
DOOR HARDWARE SET 2

- GENERAL
1. DOOR HUNG TO THE FRAME WITH HINGES
 2. PANIC HARDWARE WITH LOCKSET
 3. THRESHOLD NEEDED
 4. SEALED AND PROTECTED DOOR (1HR RATED)
 5. NOT ELECTRIFIED DOOR
 6. DOOR CLOSER
 7. DOOR MUST BE SEALED

- SPECIFIC CONSIDERATIONS
1. HEAVY FREQUENCY OF USE
 2. EXPOSED TO WEATHER/CLIMATE
 3. MATERIAL: TEMPERED GLASS AND ALUMINIUM
 4. VERIFY DOOR SING DIRECTION ON EXISTING CONDITIONS PLAN



OUTSIDE THE BUILDING

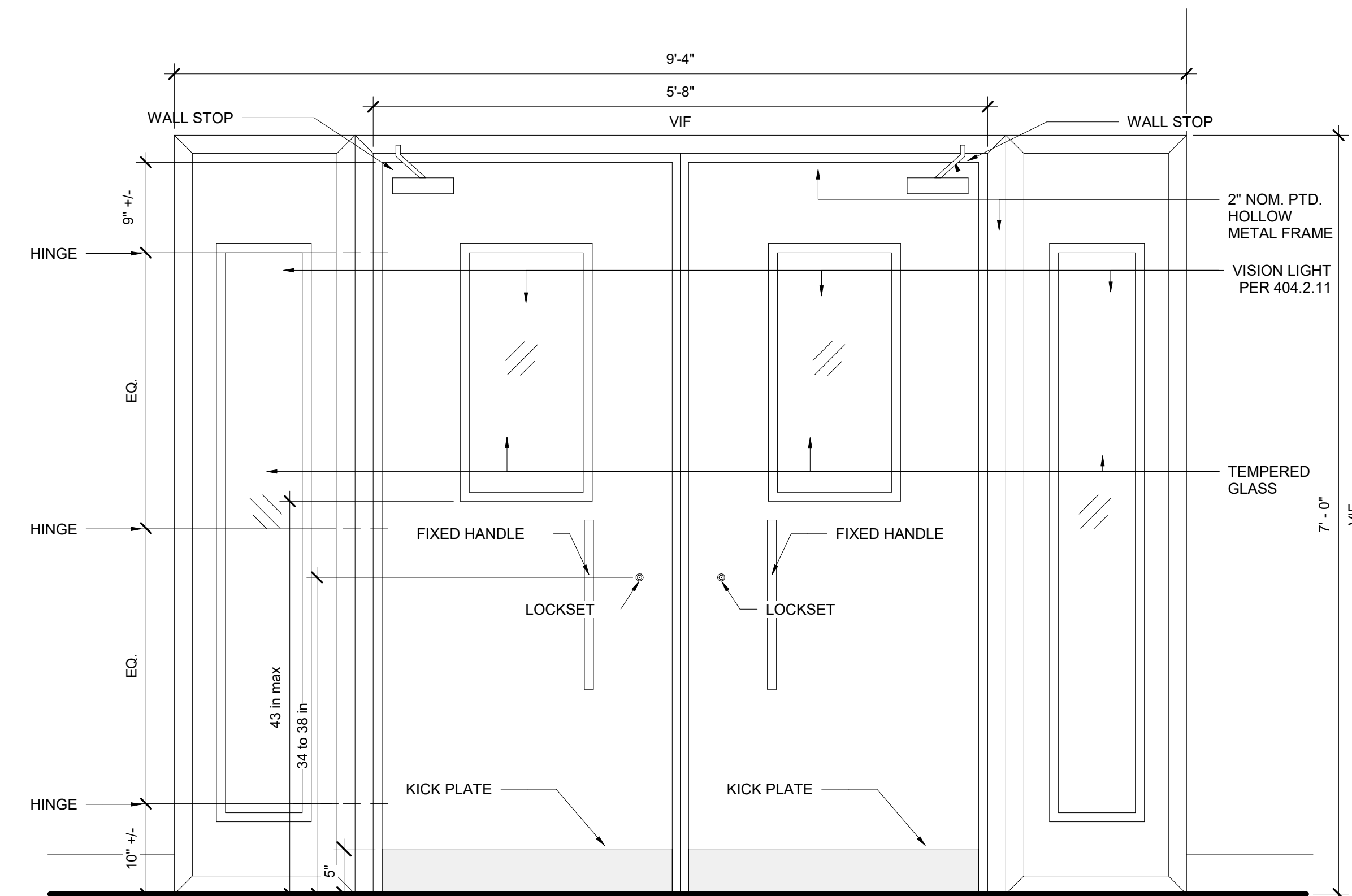


INSIDE THE BUILDING

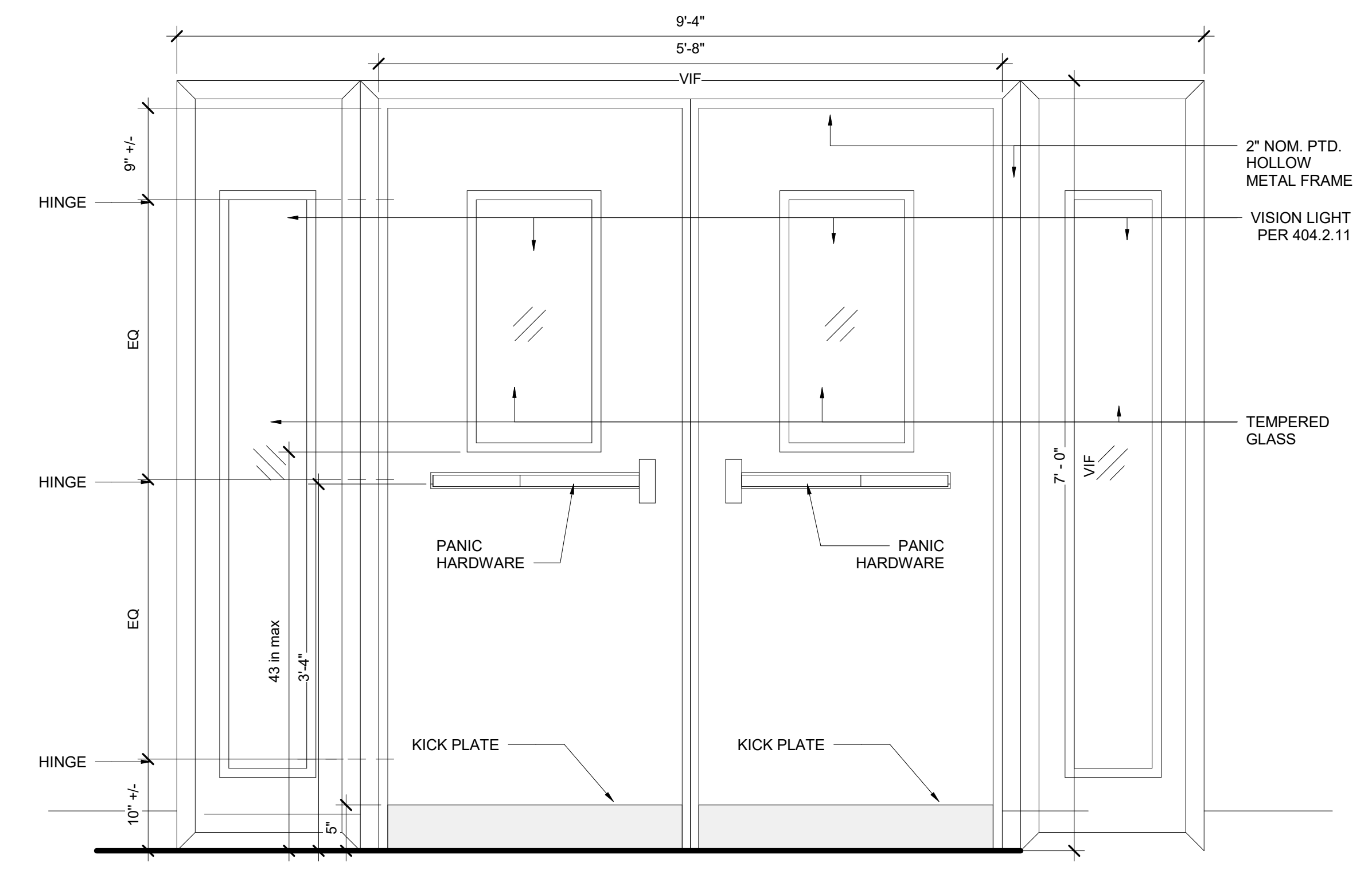
DOOR HARDWARE SET 3

- GENERAL
1. DOOR HUNG TO THE FRAME WITH HINGES
 2. PANIC HARDWARE WITH LOCKSET
 3. NO THRESHOLD NEEDED
 4. ELECTRIFIED DOOR
 5. DOOR CLOSER

- SPECIFIC CONSIDERATIONS
1. HEAVY FREQUENCY OF USE
 2. MATERIAL: TEMPERED GLASS AND ALUMINIUM
 3. VERIFY DOOR SING DIRECTION ON EXISTING CONDITIONS PLAN



LOBBY ELEVATION



HALLWAY ELEVATION

NOTE:
 1. THE CONTRACTOR MUST VERIFY ALL DIMENSIONS IN THE FIELD PRIOR TO ORDERING AND INSTALLATION.
 2. DOORS SLABS AND FRMASE TO BE REPLACED FOLLOWING THE PROPOSED HARDWARE SET



PLATO
MARINAKOS, JR.
ARCHITECT, LLC

www.plato-studio.com

1617 JFK BLVD
 20th Floor
 Philadelphia, PA 19103
 888-312-5369 OFFICE
 267-866-0931 DIRECT
 plato@plato-studio.com

ISSUED FOR
 BIDDING
 5/31/24

ARCHITECT SEAL MUST BE IN RED INK

OWNER
Vision Academy Charter School

ONE CALL #:



SITE SAFETY

It is the responsibility of the general contractor and/or the contractor listed as the licensed entity on the building permit per the municipality to ensure all site safety requirements are in place and followed, prior to, during, and after the commencement of the construction process until they are 100% complete and have received a building certificate of occupancy by governing agencies. They are also responsible for any unsafe conditions caused by or related to their sub-contractors' work. Plato Marinos, Architect LLC, and their professional consultants (associated with these documents) are not responsible for means and methods of construction, and/or site safety, including, but not limited to, osha construction safety requirements, standard construction, job-site safety, job-site safety training of workers, safe work site organization, safety direction and/or safety engineering of required safety elements. It is the sole responsibility of the licensed contractor to ensure that all site safety measures are in accordance with the governing authorities. Please refer to OSHA website (www.osha.gov) for additional training and information requirements for site safety compliance.

REV	DATE	DESCRIPTION

APPROVAL STAMP

716 EMERSON AVE - RECTORY

DOOR HARDWARE TYPES

Project number	Project Number
Date	5/31/24
Drawn by	Author
Checked by	Checker

A103

Scale 1" = 1'-0"

DOOR HARDWARE SET 4

GENERAL

1. DOOR HUNG TO THE FRAME WITH HINGES
2. PANIC HARDWARE WITH LOCKSET
3. THRESHOLD NEEDED
4. SEALED AND PROTECTED DOOR (1HR RATED)
5. ELECTRIFIED DOOR
6. DOOR CLOSER
7. DOOR MUST BE SEALED

SPECIFIC CONSIDERATIONS

1. HEAVY FREQUENCY OF USE
2. EXPOSED TO WEATHER/CLIMATE
3. MATERIAL: TEMPERED GLASS AND ALUMINIUM

NOTE:

1. THE CONTRACTOR MUST VERIFY ALL DIMENSIONS IN THE FIELD PRIOR TO ORDERING AND INSTALLATION.
2. DOORS SLABS AND FRMASE TO BE REPLACED FOLLOWING THE PROPOSED HARDWARE SET



PLATO
MARINAKOS, JR.
ARCHITECT, LLC

www.plato-studio.com

1617 JFK BLVD
20th Floor
Philadelphia, PA 19103
888-312-5369 OFFICE
267-866-0931 DIRECT
plato@plato-studio.com

ISSUED FOR
BIDDING
5/31/24

ARCHITECT SEAL MUST BE IN RED INK

OWNER

Vision Academy Charter
School

ONE CALL #:



SITE SAFETY

It is the responsibility of the general contractor and/or the contractor listed as the licensed entity on the building permit per the municipality to ensure all site safety requirements are in place and followed, prior to, during, and after the commencement of the construction process until they are 100% complete and have received a building certificate of occupancy by governing agencies. They are also responsible for any unsafe conditions caused by or related to their sub-contractors' work. Plato Marinakos, Architect LLC, and their professional consultants (associated with these documents) are not responsible for means and methods of construction, and/or site safety, including, but not limited to, OSHA construction safety requirements, standard construction, job-site safety, job-site safety training of workers, safe work site organization, safety direction and/or safety engineering of required safety elements. It is the sole responsibility of the licensed contractor to ensure that all site safety measures are in accordance with the governing authorities. Please refer to OSHA website (www.osha.gov) for additional training and information requirements for site safety compliance.

REV	DATE	DESCRIPTION

APPROVAL STAMP

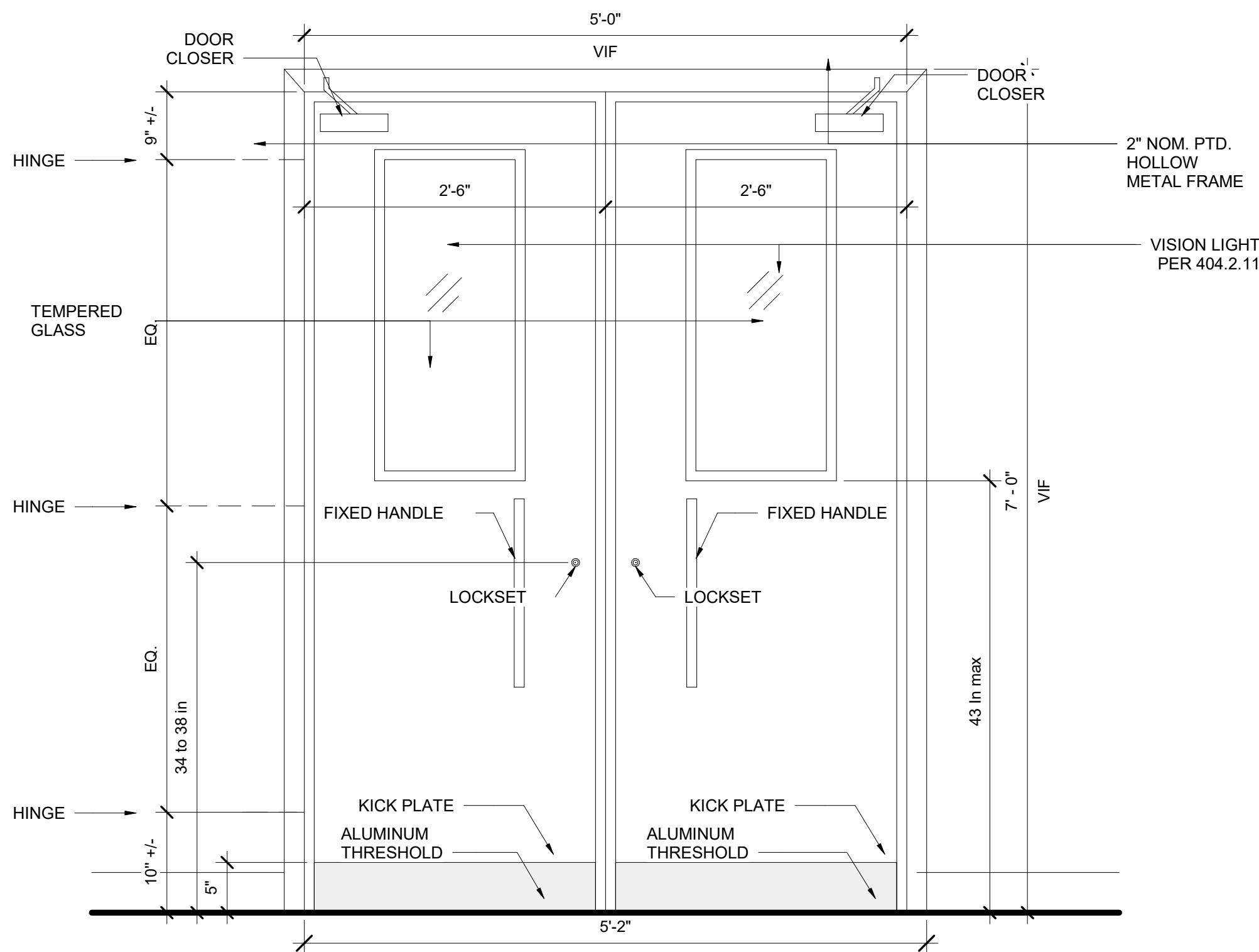
716 EMERSON AVE -
RECTORY

DOOR HARDWARE TYPES

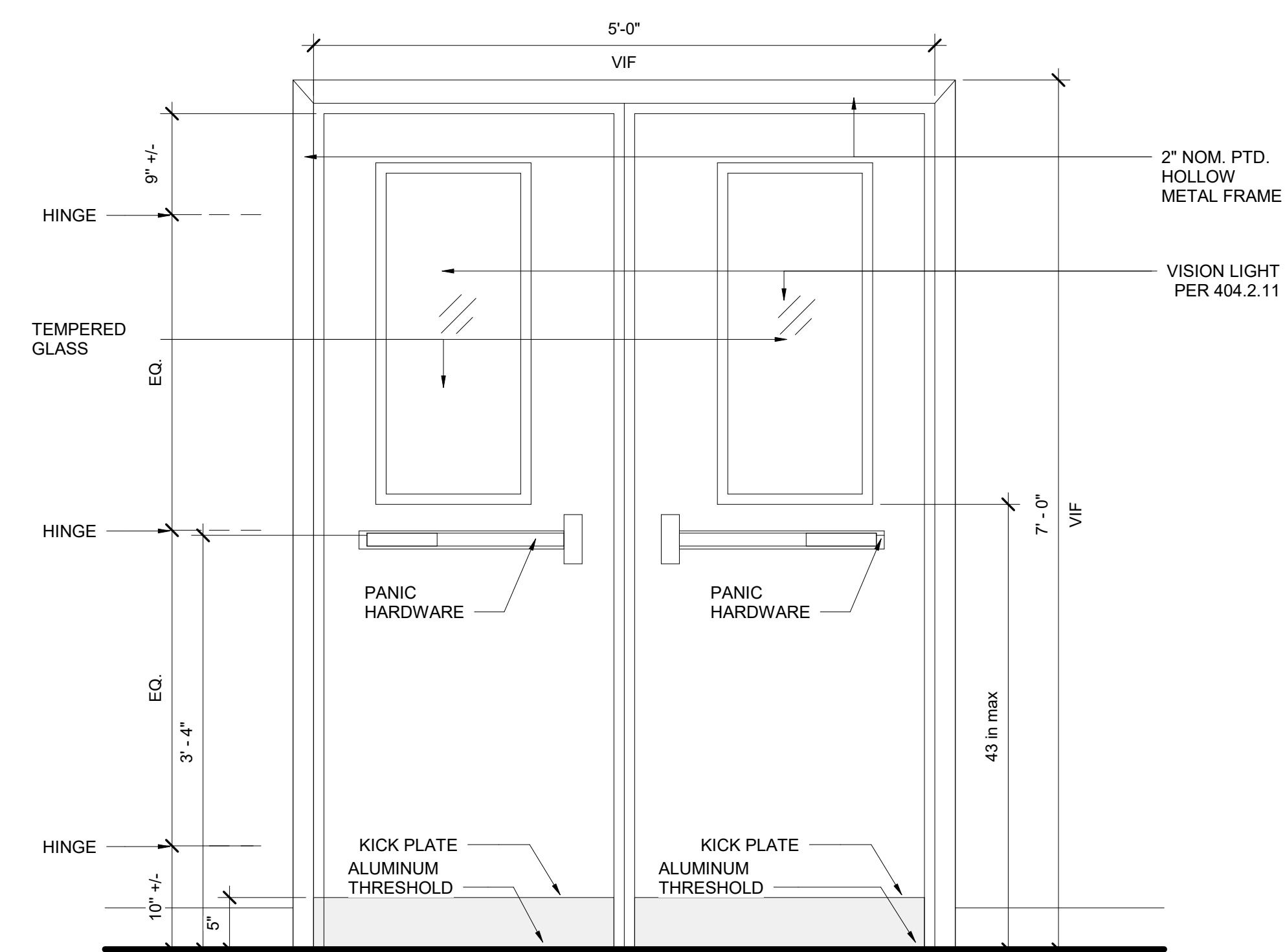
Project number	Project Number
Date	5/31/24
Drawn by	Author
Checked by	Checker

A104

Scale 1" = 1'-0"



OUTSIDE THE BUILDING



INSIDE THE BUILDING