

**ISSUED FOR  
BIDDING  
6/3/24**

ARCHITECT SEAL MUST BE IN RED INK

OWNER

**Vision Academy Charter  
School**

ONE CALL #:



**SITE SAFETY**

It is the responsibility of the general contractor and/or the contractor listed as the licensed entity on the building permit for the municipality to ensure all site safety requirements are in place and followed, prior to, during, and after the commencement of the construction process until they are 100% complete and have received a building certificate of occupancy by governing agencies. They are also responsible for any unsafe conditions caused by or related to their sub-contractors' work. Plato Marinakos, Architect LLC and their professional consultants (associated with these documents) are not responsible for means and methods of construction, and/or site safety, including, but not limited to, osha construction safety requirements, standard construction, job site safety, job site safety training of workers, safe work site organization, safety direction and/or safety engineering of required safety elements. It is the sole responsibility of the licensed contractor to ensure that all site safety measures are in accordance with the governing authorities. Please refer to OSHA website ([www.osha.gov](http://www.osha.gov)) for additional training and information requirements for site safety compliance.

REV	DATE	DESCRIPTION

APPROVAL STAMP

**716 EMERSON AVE -  
SCHOOL**

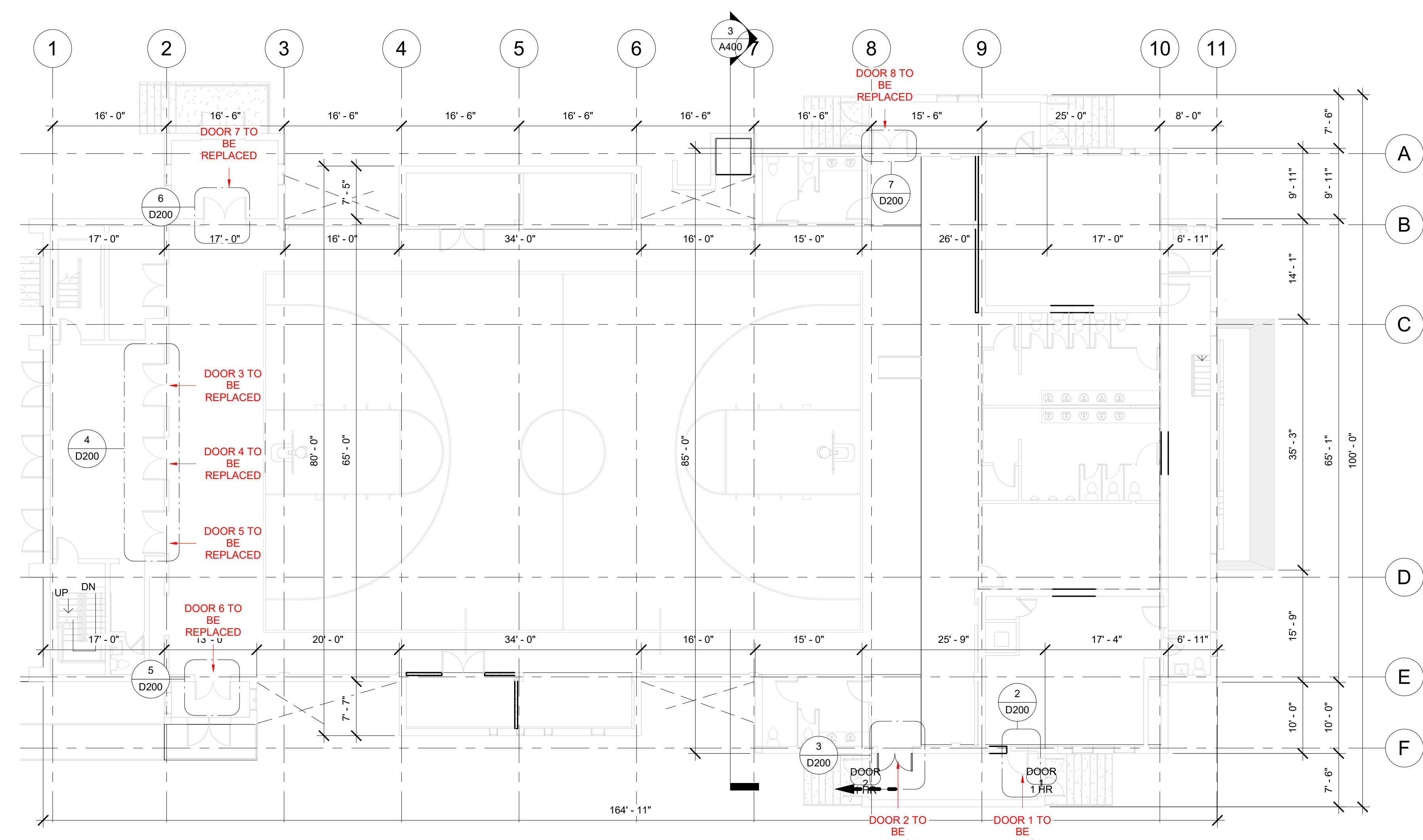
**EXISTING CONDITIONS**

Project number	Project Number
Date	6/3/24
Drawn by	Author
Checked by	Checker

**D200**

Scale As indicated

6/3/2024 11:32:06 AM



**NOTE:**  
THE CONTRACTOR MUST VERIFY ALL  
DIMENSIONS IN THE FIELD PRIOR TO  
ORDERING AND INSTALLATION

**DOOR SCHEDULE 1**

MARK	Level	PANEL		HARDWARE SET
		WIDTH	HEIGHT	
DOOR 9	GROUND LEVEL	5'-4"	7'-0"	3
3:1 DOOR 2	FIRST FLOOR	3'-0"	7'-0"	1
1:1 DOOR 3	FIRST FLOOR	6'-0"	7'-0"	2
DOOR 4	FIRST FLOOR	6'-0"	7'-0"	2
DOOR 5	FIRST FLOOR	6'-0"	7'-0"	2
DOOR 6	FIRST FLOOR	5'-0"	6'-11"	2
DOOR 7	FIRST FLOOR	6'-0"	7'-0"	2
DOOR 8	FIRST FLOOR	5'-0"	7'-0"	2
DOOR 1	FIRST FLOOR	4'-11"	8'-0"	2
2:7 GRAND TOTAL:				9

1 EXISTING FIRST FLOOR  
SCALE: 3/32" = 1'-0"



2 DOOR 1  
SCALE: 1/16" = 1'-0"



3 DOOR 2  
SCALE: 1/16" = 1'-0"



4 DOOR 3 - 5  
SCALE: 1/16" = 1'-0"



5 DOOR 6  
SCALE: 1/16" = 1'-0"



6 DOOR 7  
SCALE: 1/16" = 1'-0"



7 DOOR 8  
SCALE: 1/16" = 1'-0"



ISSUED FOR  
BIDDING  
6/3/24

ARCHITECT SEAL MUST BE IN RED INK

OWNER

Vision Academy Charter  
School

ONE CALL #:



**SITE SAFETY**

It is the responsibility of the general contractor and/or the contractor listed as the licensed entity on the building permit per the municipality to ensure all site safety requirements are in place and followed, prior to, during, and after the commencement of the construction process until they are 100% complete and have received a building certificate of occupancy by governing agencies. They are also responsible for any unsafe conditions caused by or related to their sub-contractors' work. Plato Marinakos, Architect LLC and their professional consultants (associated with these documents) are not responsible for means and methods of construction, and/or site safety, including, but not limited to, osha construction safety requirements, standard construction, job site safety, job site safety training of workers, safe work site organization, safety direction and/or safety engineering of required safety elements. It is the sole responsibility of the licensed contractor to ensure that all site safety measures are in accordance with the governing authorities. Please refer to OSHA website ([www.osha.gov](http://www.osha.gov)) for additional training and information requirements for site safety compliance.

REV	DATE	DESCRIPTION

APPROVAL STAMP

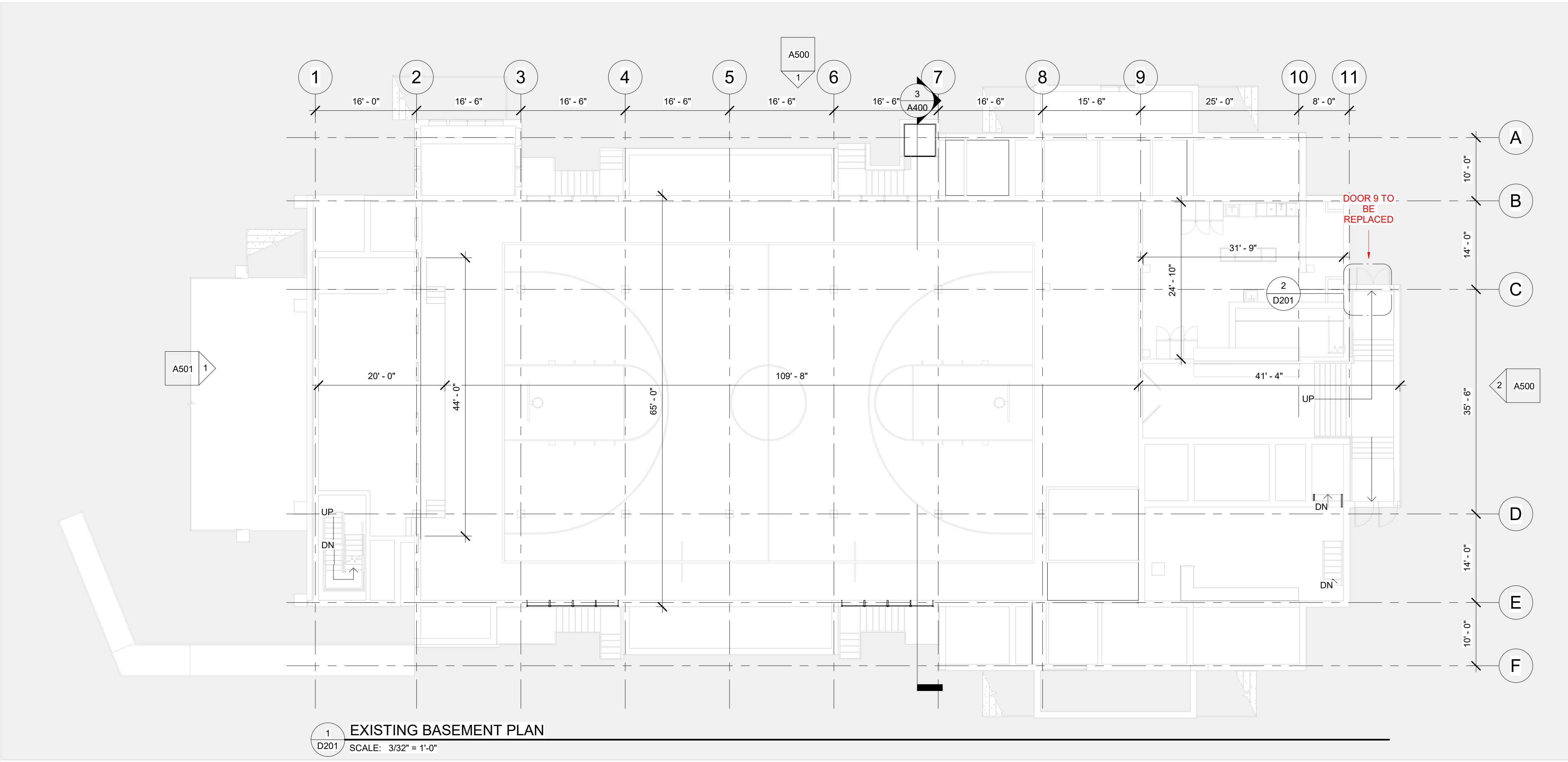
716 EMERSON AVE -  
SCHOOL

**EXISTING CONDITIONS**

Project number	Project Number
Date	6/3/24
Drawn by	Author
Checked by	Checker

**D201**

Scale As indicated



1 EXISTING BASEMENT PLAN  
D201 SCALE: 3/32" = 1'-0"

2 A501



2 DOOR3  
D201 SCALE: 1/16" = 1'-0"



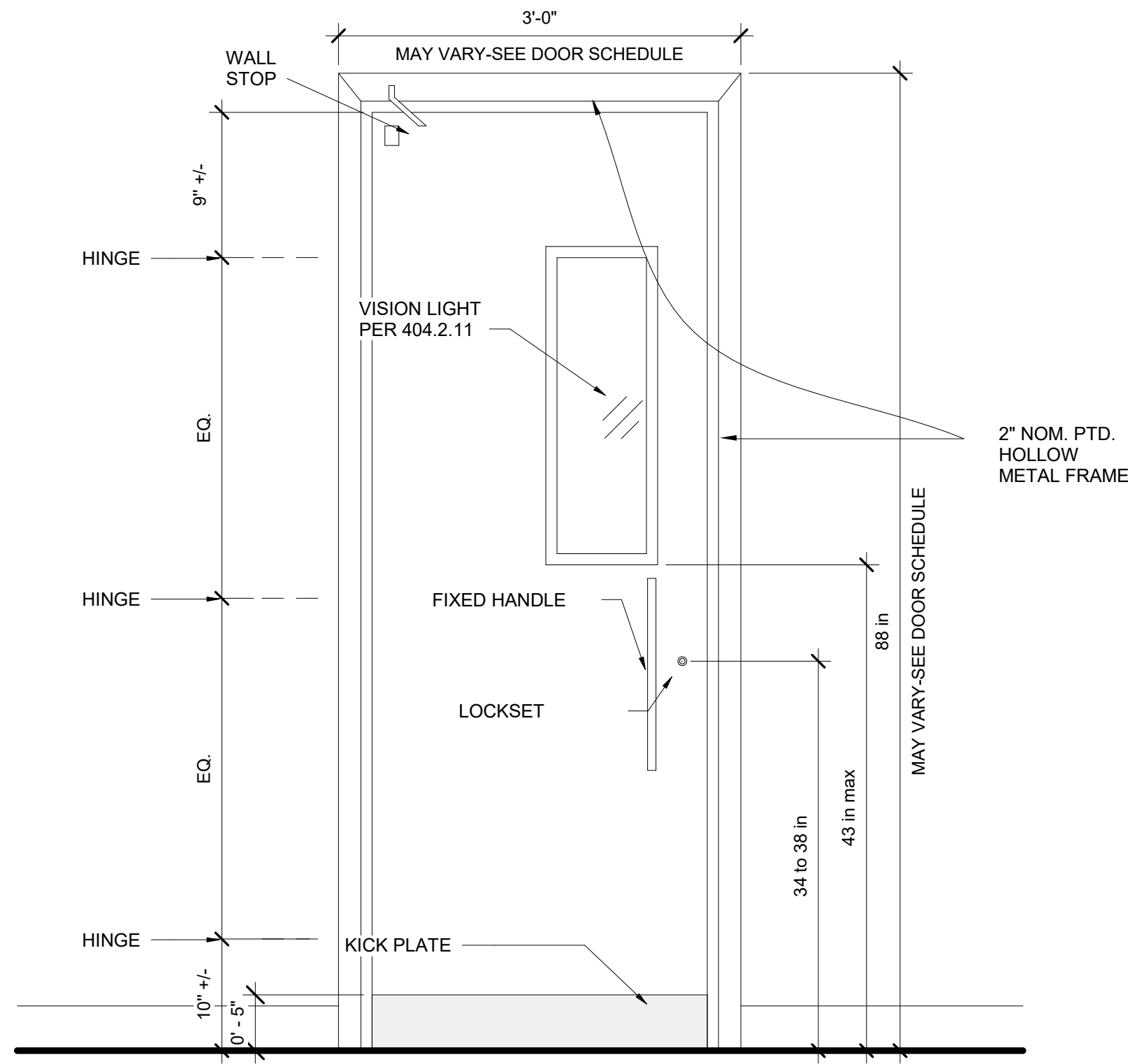
## DOOR HARDWARE SET 1

### GENERAL

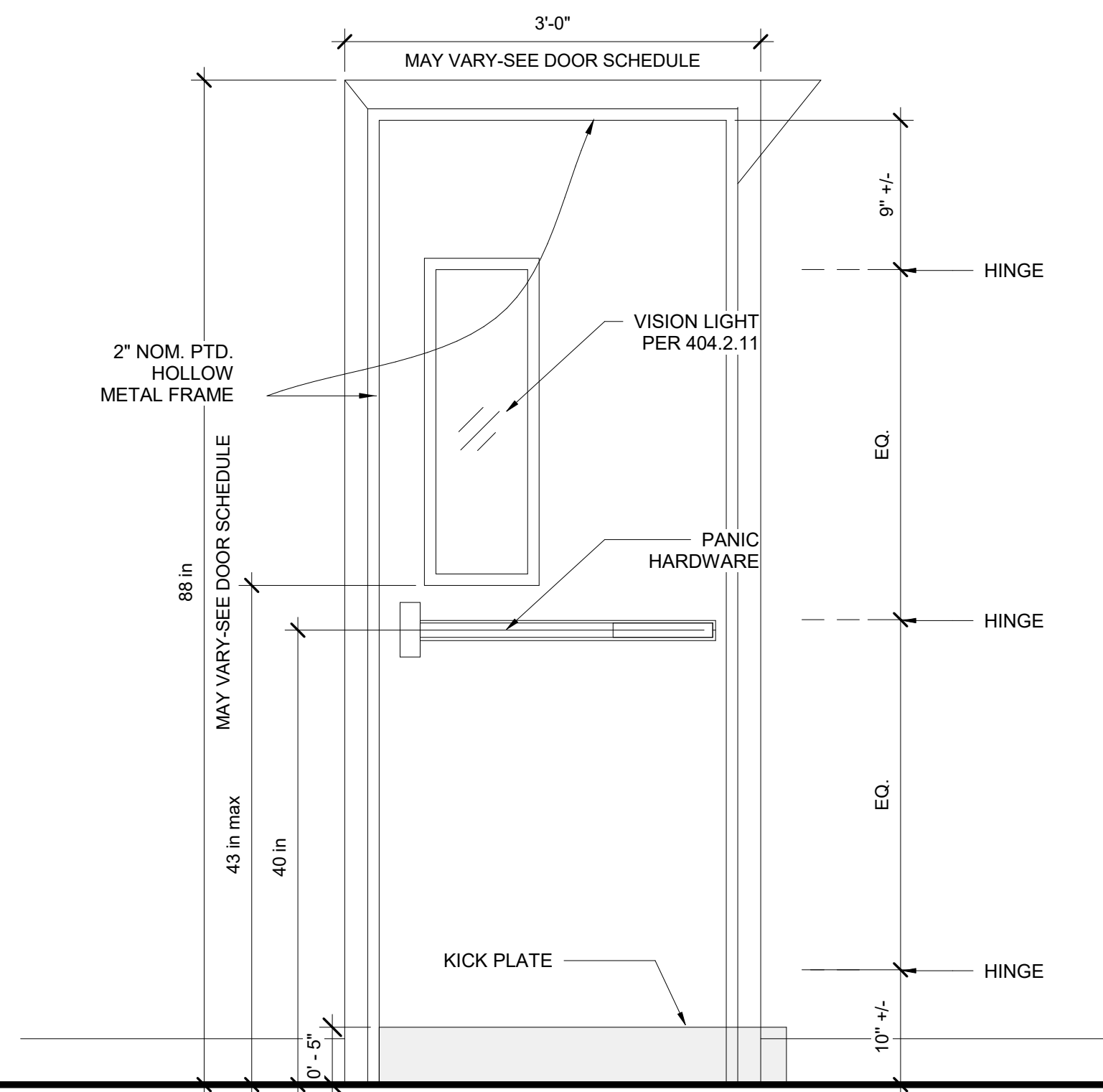
1. DOOR HUNG TO THE FRAME WITH HINGES
2. PANIC HARDWARE WITH LOCKSET
3. NOT ELECTRIFIED DOOR
5. DOOR CLOSER
6. DOOR MUST BE SEALED

### SPECIFIC CONSIDERATIONS

1. HEAVY FREQUENCY OF USE
3. MATERIAL: TEMPERED GLASS AND ALUMINIUM



OUTSIDE



INSIDE

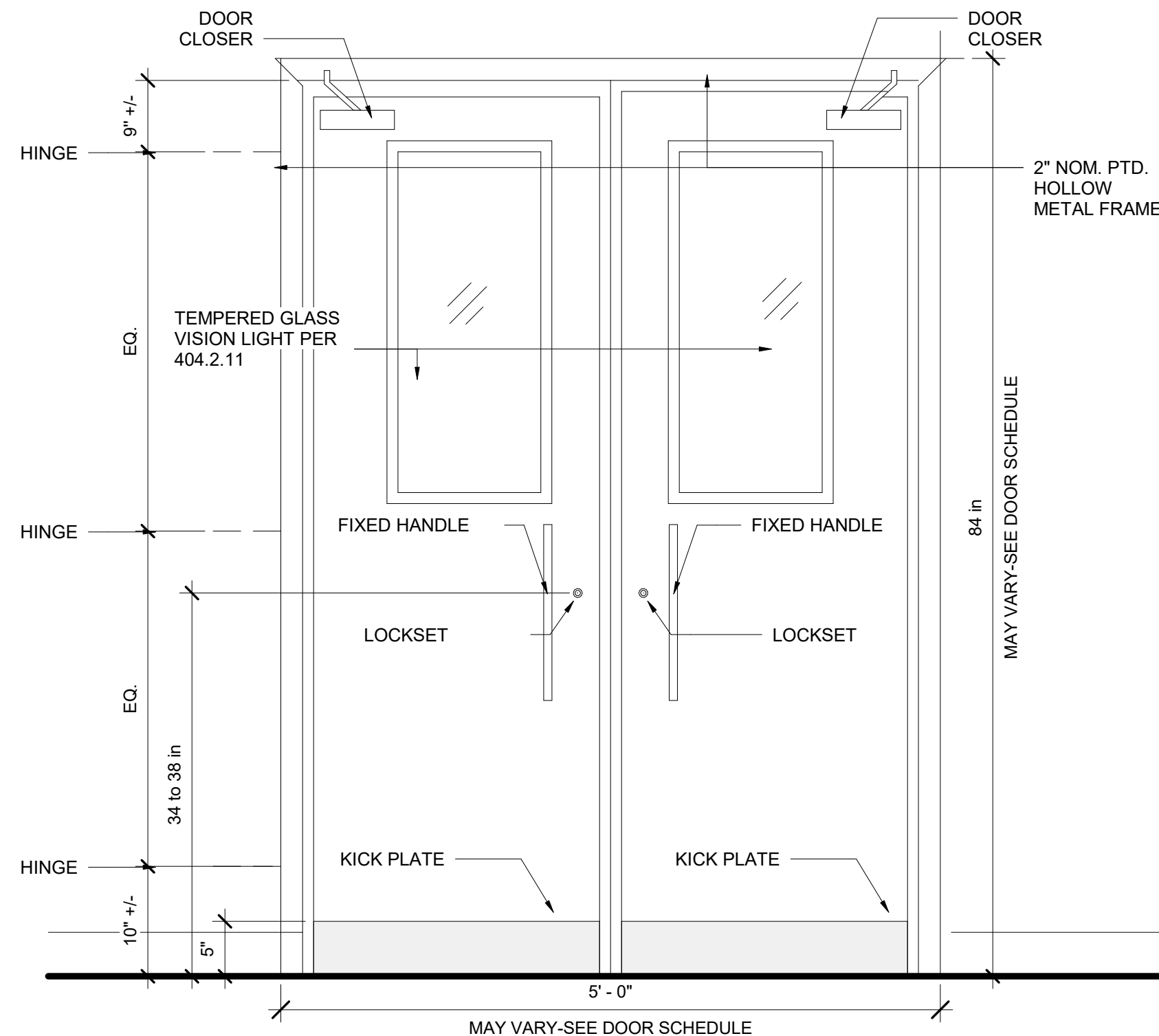
## DOOR HARDWARE SET 2

### GENERAL

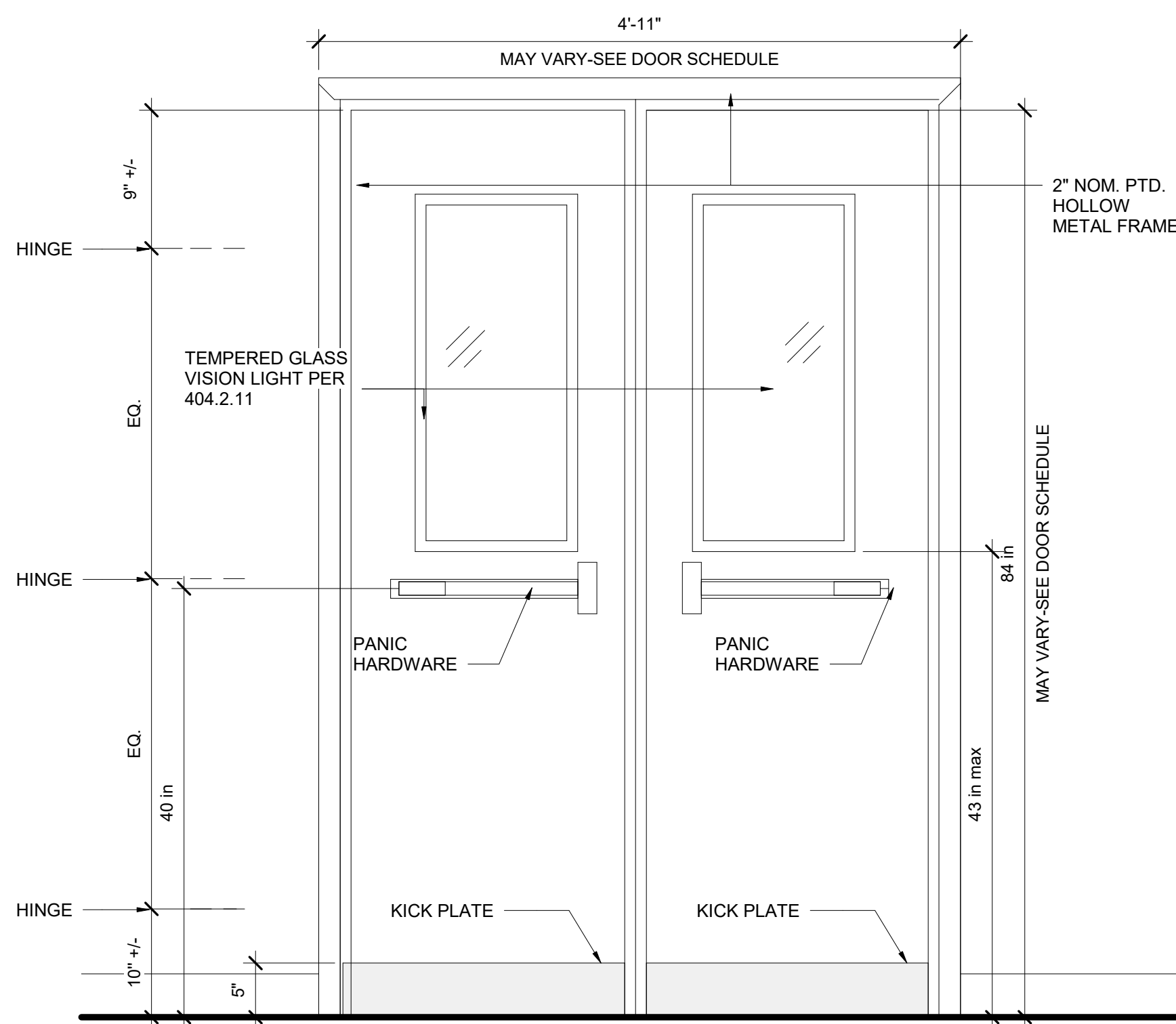
1. DOOR HUNG TO THE FRAME WITH HINGES
2. SECURITY LOCKSET
3. NOT ELECTRIFIED DOOR
4. DOOR CLOSER

### SPECIFIC CONSIDERATIONS

1. HEAVY FREQUENCY OF USE
2. NOT EXPOSED TO WEATHER/CLIMATE (INTERIOR USE)
3. MATERIAL: TEMPERED GLASS AND ALUMINIUM



OUTSIDE GYM



INSIDE GYM

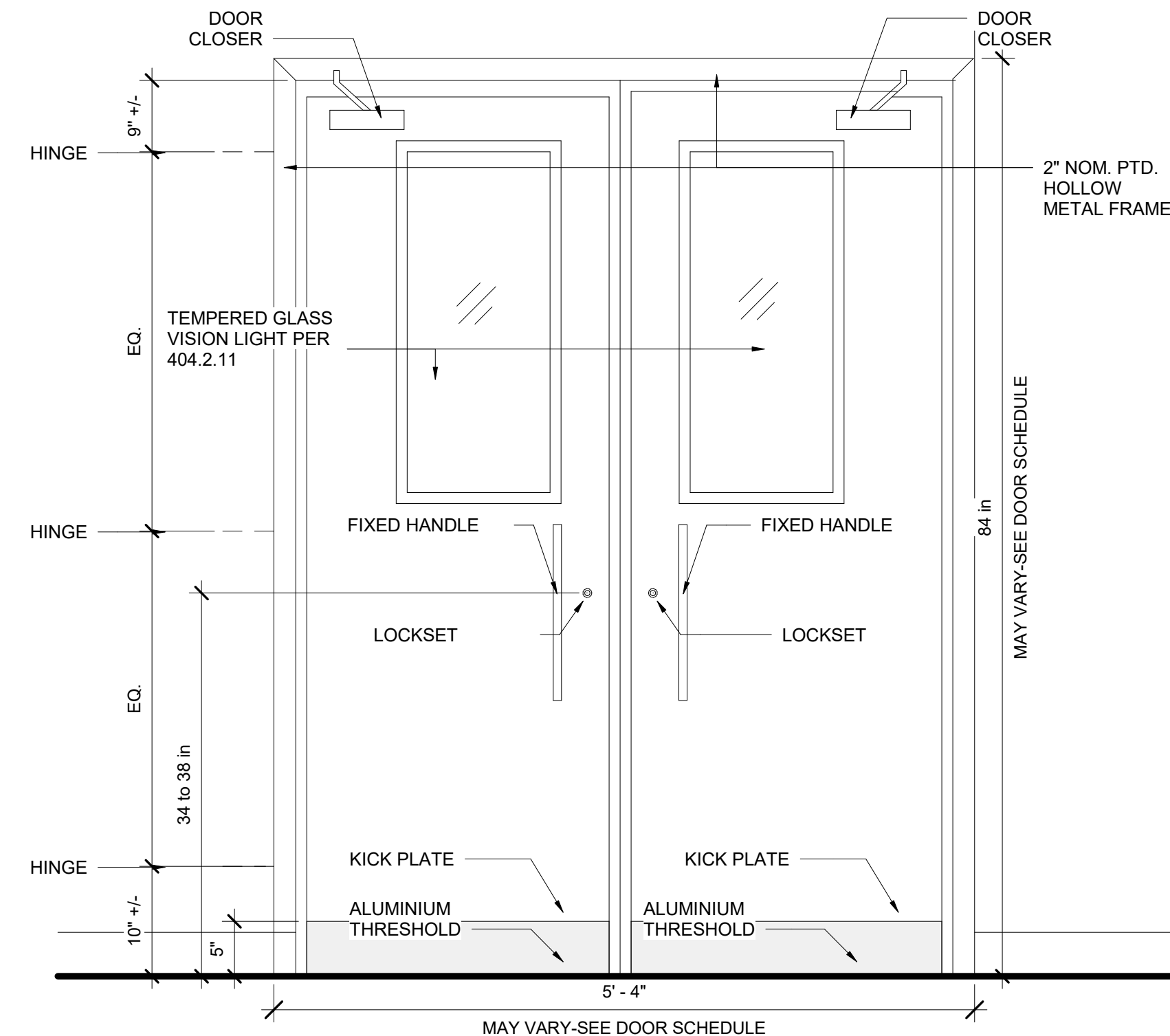
## DOOR HARDWARE SET 3

### GENERAL

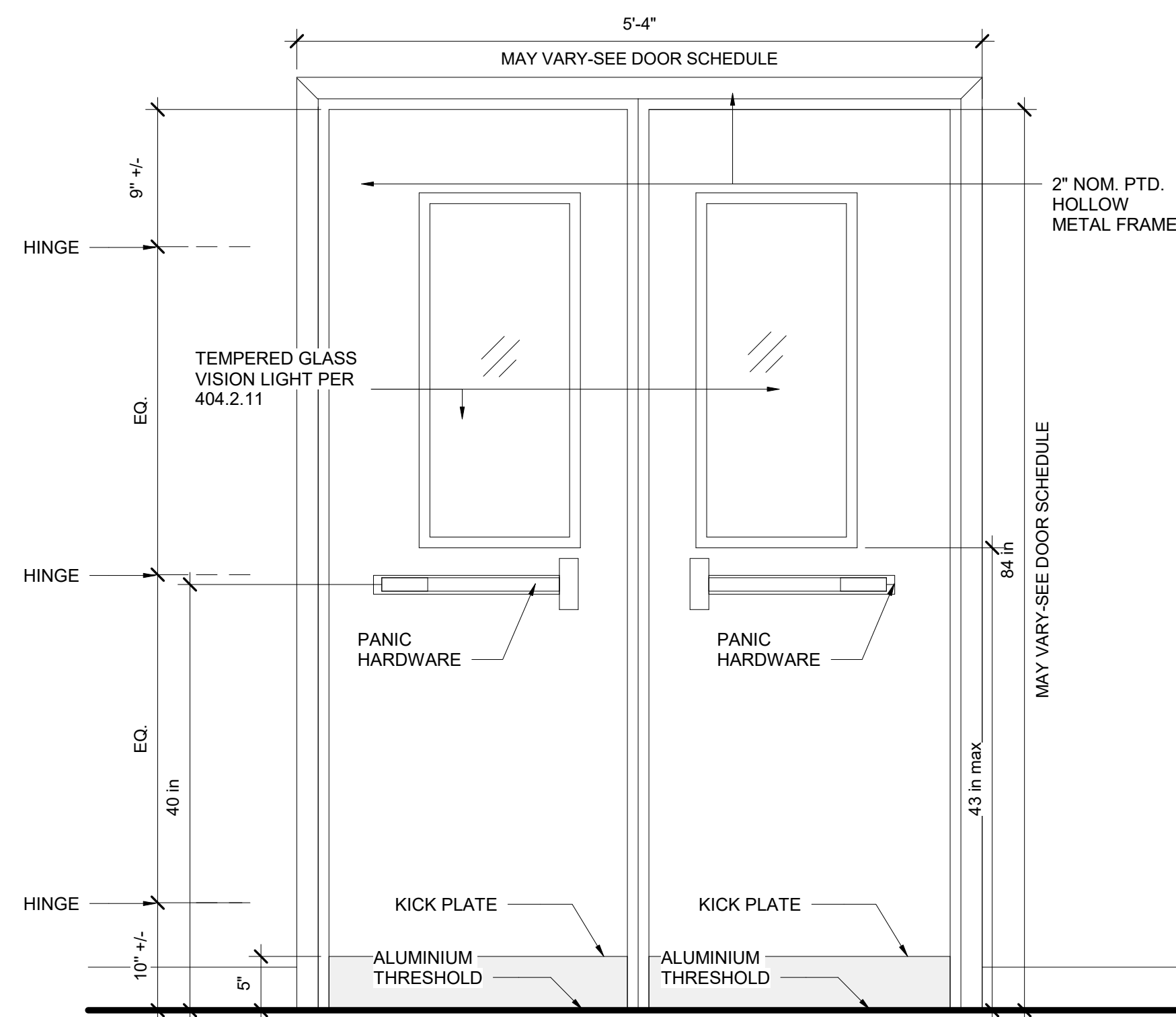
1. DOOR HUNG TO THE FRAME WITH HINGES
2. SECURITY LOCKSET
3. NOT ELECTRIFIED DOOR
4. DOOR CLOSER
5. THRESHOLD NEEDED
6. DOOR MUST BE SEALED AND PROTECTED (1HR RATED)

### SPECIFIC CONSIDERATIONS

1. HEAVY FREQUENCY OF USE
2. EXPOSED TO WEATHER/CLIMATE
3. MATERIAL: TEMPERED GLASS AND ALUMINIUM



OUTSIDE THE BUILDING



INSIDE THE BUILDING

### NOTE:

1. THE CONTRACTOR MUST VERIFY ALL DIMENSIONS IN THE FIELD PRIOR TO ORDERING AND INSTALLATION.
2. DOORS SLABS AND FRAMES TO BE REPLACED FOLLOWING THE PROPOSED HARDWARE SET

**PLATO**  
STUDIO

**PLATO**  
MARINAKOS, JR.  
ARCHITECT, LLC

[www.plato-studio.com](http://www.plato-studio.com)

107 S 2nd Street  
4th Floor  
Philadelphia, PA 19106  
267-866-0930 OFFICE  
267-866-0931 DIRECT  
plato@plato-studio.com

ISSUED FOR  
BIDDING  
6/3/24

ARCHITECT SEAL MUST BE IN RED INK

OWNER

Vision Academy Charter  
School

ONE CALL #:



### SITE SAFETY

It is the responsibility of the general contractor and/or the contractor listed as the licensed entity on the building permit per the municipality to ensure all site safety requirements are in place and followed, prior to, during, and after the commencement of the construction process until they are 100% complete and have received a building certificate of occupancy by governing agencies. They are also responsible for any unsafe conditions caused by or related to their sub-contractors' work. Plato Marinakos, Architect LLC and their professional consultants (associated with these documents) are not responsible for means and methods of construction, and/or site safety, including, but not limited to, OSHA construction safety requirements, standard construction, job site safety, job site safety training of workers, safe work site organization, safety direction and/or safety engineering of required safety elements. It is the sole responsibility of the licensed contractor to ensure that all site safety measures are in accordance with the governing authorities. Please refer to OSHA website ([www.osha.gov](http://www.osha.gov)) for additional training and information requirements for site safety compliance.

REV	DATE	DESCRIPTION

APPROVAL STAMP

716 EMERSON AVE -  
SCHOOL

### DOOR HARDWARE TYPES

Project number	Project Number
Date	6/3/24
Drawn by	Author
Checked by	Checker

**D202**

Scale 1" = 1'-0"