

ISSUED FOR BIDDING
6/3/24

ARCHITECT SEAL MUST BE IN RED INK

OWNER
Vision Academy Charter School

ONE CALL #:



SITE SAFETY

It is the responsibility of the general contractor and/or the contractor listed as the licensed entity on the building permit for the municipality to ensure all site safety requirements are in place and followed, prior to, during, and after the commencement of the construction process until they are 100% complete and have received a building certificate of occupancy by governing agencies. They are also responsible for any unsafe conditions caused by or related to their sub-contractors' work. Plato Marinakos, Architect LLC and their professional consultants (associated with these documents) are not responsible for means and methods of construction, and/or site safety, including, but not limited to, osha construction safety requirements, standard construction, job site safety, job site safety training of workers, safe work site organization, safety direction and/or safety engineering of required safety elements. It is the sole responsibility of the licensed contractor to ensure that all site safety measures are in accordance with the governing authorities. Please refer to OSHA website (www.osha.gov) for additional training and information requirements for site safety compliance.

REV	DATE	DESCRIPTION

APPROVAL STAMP

716 EMERSON AVE - SCHOOL
lansdowne, PA.

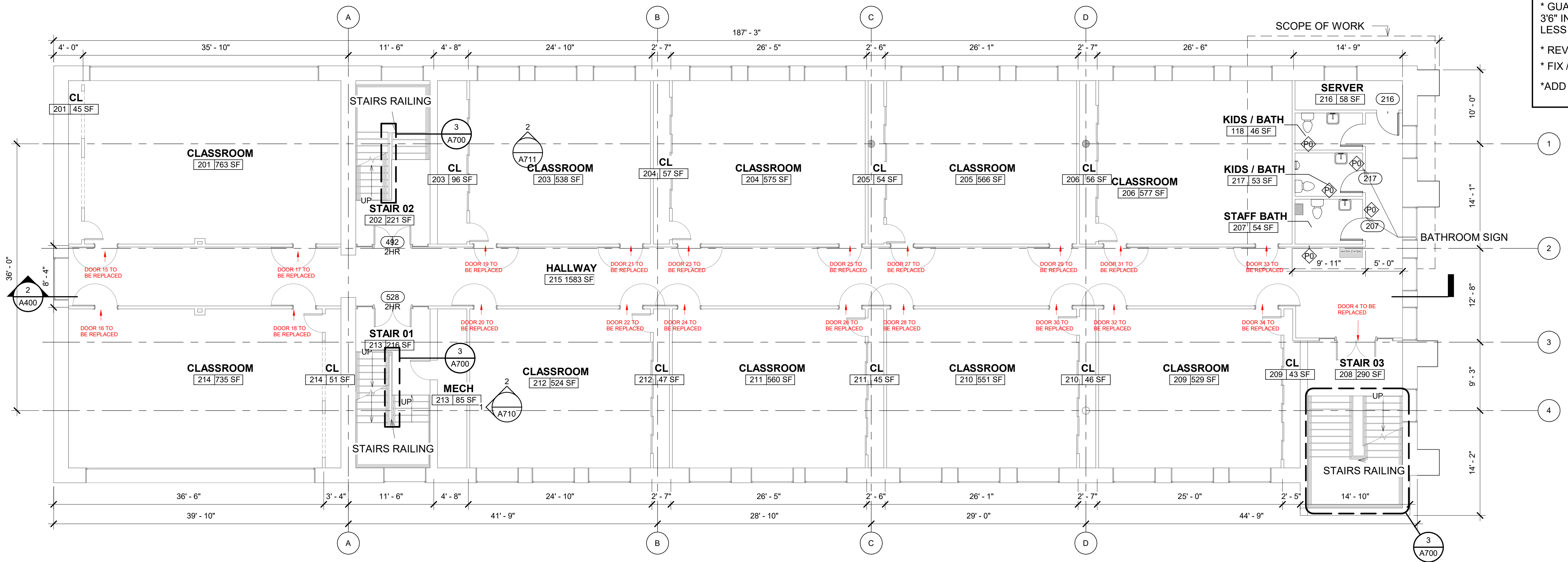
FLOOR PLANS

Project number	N/A
Date	6/3/2024
Drawn by	Author
Checked by	Checker

A101

Scale As indicated

- NOTE**
- * SMART BOARDS IN EACH CLASSROOM
 - * SHELVES IN EACH CLASSROOM
 - * GUARDRAIL TO BE MODIFIED - 3'6" IN EACH STAIRS - OPENINGS MUST BE LESS THAN 19 INCHES.
 - * REVIEW DEMO PLANS
 - * FIX / ADD BATHROOMS
 - * ADD SERVER



1 SECOND FLOOR PLAN
SCALE: 1/8" = 1'-0"



2 DOOR 4
N.T.S.

**ISSUED FOR
BIDDING
6/3/24**

ARCHITECT SEAL MUST BE IN RED INK

OWNER
**Vision Academy Charter
School**

ONE CALL #:



SITE SAFETY

It is the responsibility of the general contractor and/or the contractor listed as the licensed entity on the building permit per the municipality to ensure all site safety requirements are in place and followed, prior to, during, and after the commencement of the construction process until they are 100% complete and have received a building certificate of occupancy by governing agencies. They are also responsible for any unsafe conditions caused by or related to their sub-contractors' work. Plato Marinakos, Architect LLC and their professional consultants (associated with these documents) are not responsible for means and methods of construction, and/or site safety, including, but not limited to, osha construction safety requirements, standard construction, job site safety, job site safety training of workers, safe work site organization, safety direction and/or safety engineering of required safety elements. It is the sole responsibility of the licensed contractor to ensure that all site safety measures are in accordance with the governing authorities. Please refer to OSHA website (www.osha.gov) for additional training and information requirements for site safety compliance.

REV	DATE	DESCRIPTION

APPROVAL STAMP

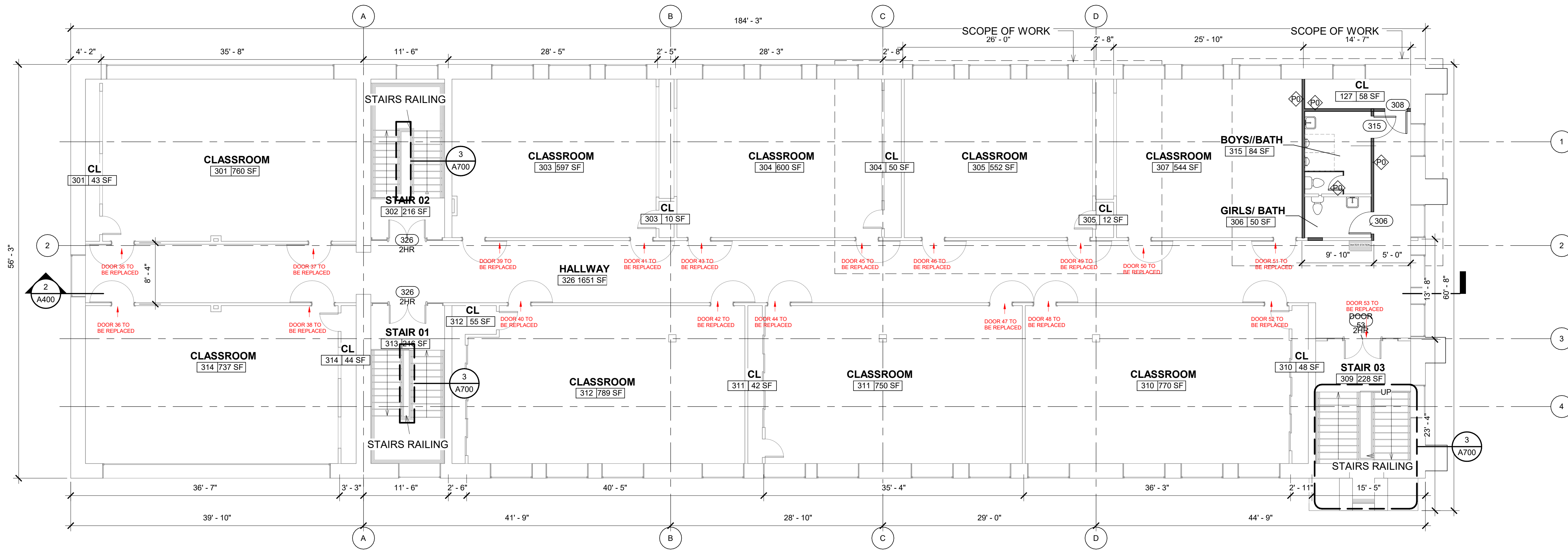
**716 EMERSON AVE -
SCHOOL**
lansdowne, PA.

FLOOR PLANS

Project number	N/A
Date	6/3/2024
Drawn by	Author
Checked by	Checker

A101.1

Scale 1/8" = 1'-0"



1 THIRD FLOOR PLAN
SCALE: 1/8" = 1'-0"

DOOR HARDWARE SET 1

- GENERAL**
 1. DOOR HUNG TO THE FRAME WITH HINGES
 2. PANIC HARDWARE WITH LOCKSET
 3. NOT ELECTRIFIED DOOR
 4. DOOR CLOSER
 5. DOOR MUST BE SEALED
 6. 180° FLUSH

- SPECIFIC CONSIDERATIONS**
 1. HEAVY FREQUENCY OF USE
 3. MATERIAL: TEMPERED GLASS AND ALUMINIUM

DOOR HARDWARE SET 2

- GENERAL**
 1. DOOR HUNG TO THE FRAME WITH HINGES
 2. SECURITY LOCKSET
 3. NOT ELECTRIFIED DOOR
 4. DOOR CLOSER

- SPECIFIC CONSIDERATIONS**
 1. HEAVY FREQUENCY OF USE
 2. NOT EXPOSED TO WEATHER/CLIMATE (INTERIOR USE)
 3. MATERIAL: TEMPERED GLASS AND ALUMINIUM

DOOR HARDWARE SET 3

- GENERAL**
 1. DOOR HUNG TO THE FRAME WITH HINGES
 2. PANIC HARDWARE WITH LOCKSET
 3. NOT ELECTRIFIED DOOR
 4. DOOR CLOSER
 5. DOOR MUST BE SEALED

- SPECIFIC CONSIDERATIONS**
 1. HEAVY FREQUENCY OF USE
 3. MATERIAL: TEMPERED GLASS AND ALUMINIUM

NOTE:
 1. THE CONTRACTOR MUST VERIFY ALL DIMENSIONS IN THE FIELD PRIOR TO ORDERING AND INSTALLATION.
 2. DOORS SLABS AND FRAME TO BE REPLACED FOLLOWING THE PROPOSED HARDWARE SET



PLATO MARINAKOS, JR. ARCHITECT, LLC

www.plato-studio.com

107 S 2nd Street
 4th Floor
 Philadelphia, PA 19106
 267-866-0930 OFFICE
 267-866-0931 DIRECT
 plato@plato-studio.com

ISSUED FOR BIDDING
 6/3/24

ARCHITECT SEAL MUST BE IN RED INK

OWNER
Vision Academy Charter School

ONE CALL #:



Know what's below. Call before you dig.

SITE SAFETY

It is the responsibility of the general contractor and/or the contractor listed as the licensed entity on the building permit per the municipality to ensure all site safety requirements are in place and followed, prior to, during, and after the commencement of the construction process until they are 100% complete and have received a building certificate of occupancy by governing agencies. They are also responsible for any unsafe conditions caused by or related to their sub-contractors' work. Plato Marinakos, Architect LLC and their professional consultants (associated with these documents) are not responsible for means and methods of construction, and/or site safety, including, but not limited to, osha construction safety requirements, standard construction, job site safety, job site safety training of workers, safe work site organization, safety direction and/or safety engineering of required safety elements. It is the sole responsibility of the licensed contractor to ensure that all site safety measures are in accordance with the governing authorities. Please refer to OSHA website (www.osha.gov) for additional training and information requirements for site safety compliance.

REV	DATE	DESCRIPTION

APPROVAL STAMP

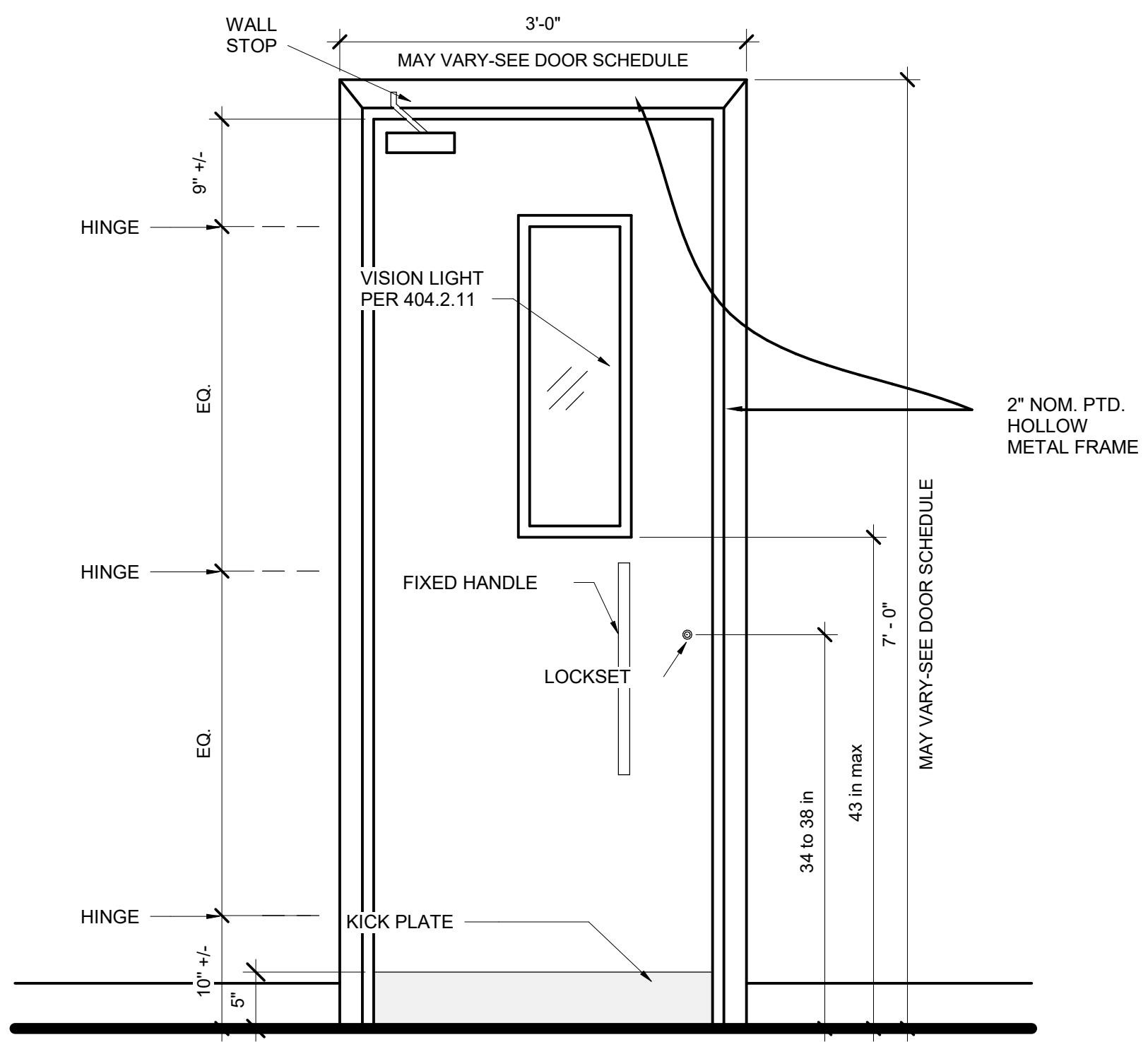
716 EMERSON AVE - SCHOOL
 lansdowne, PA.

DOOR HARDWARE TYPES

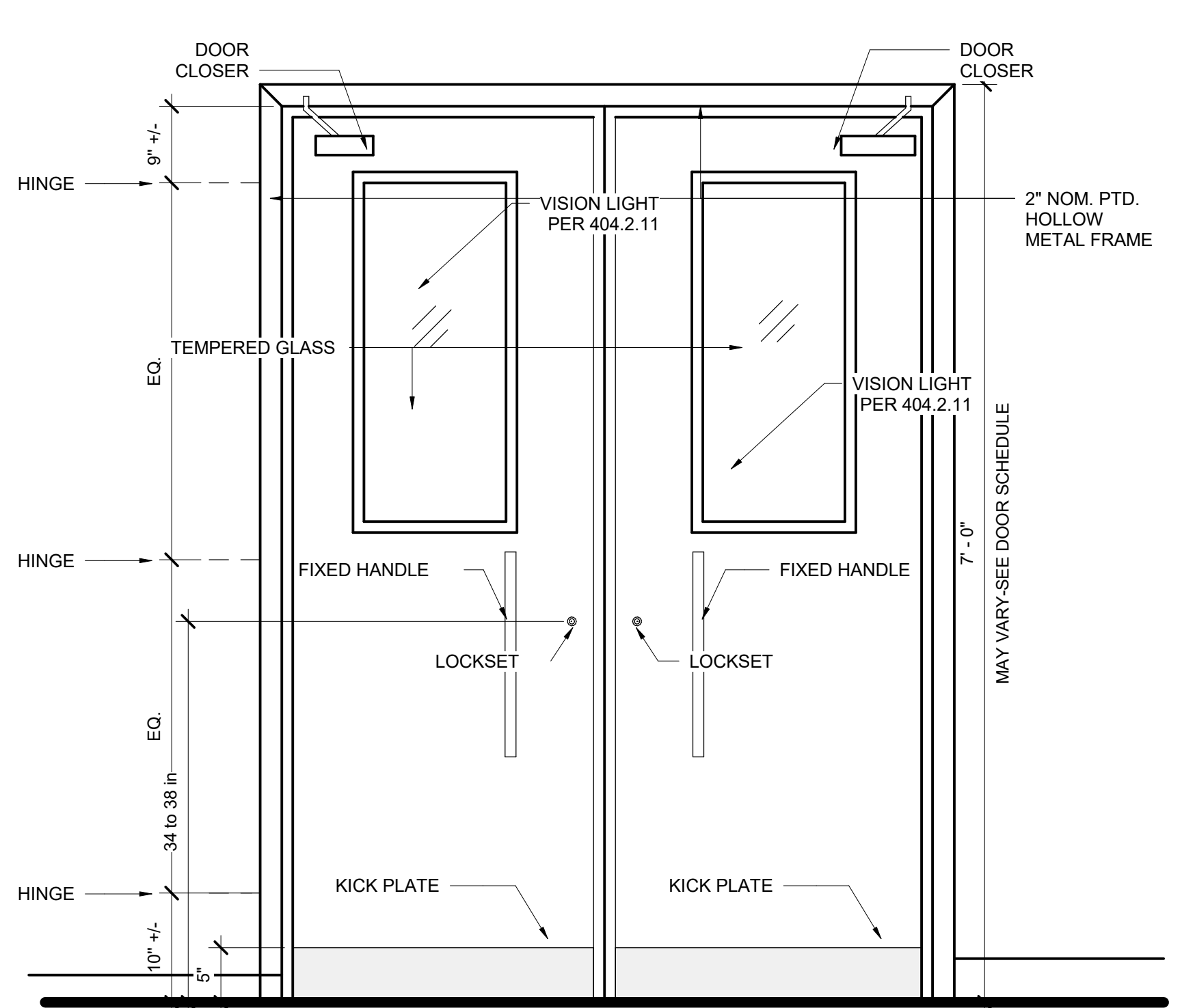
Project number	N/A
Date	6/3/2024
Drawn by	Author
Checked by	Checker

D101

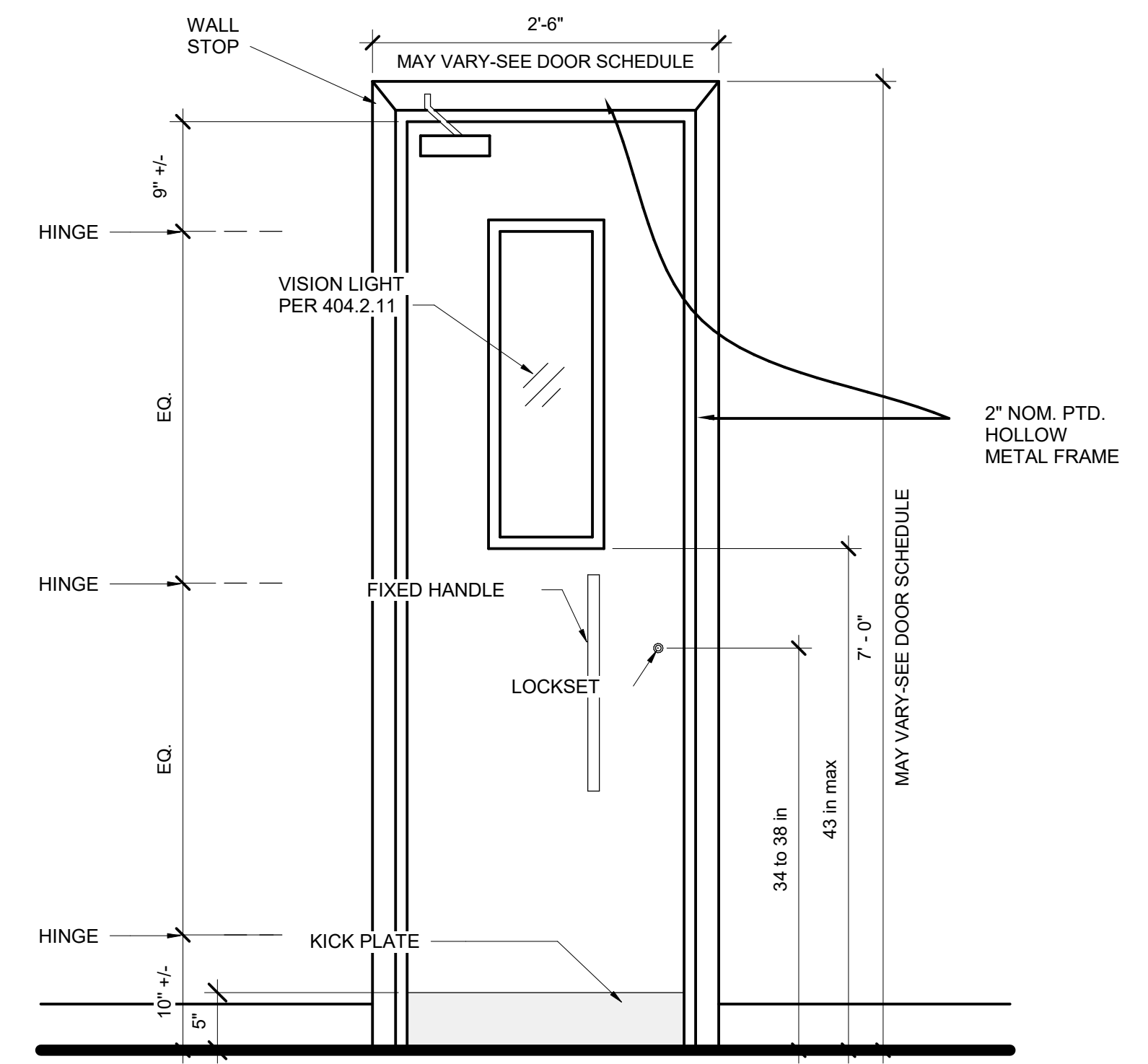
Scale 1" = 1'-0"



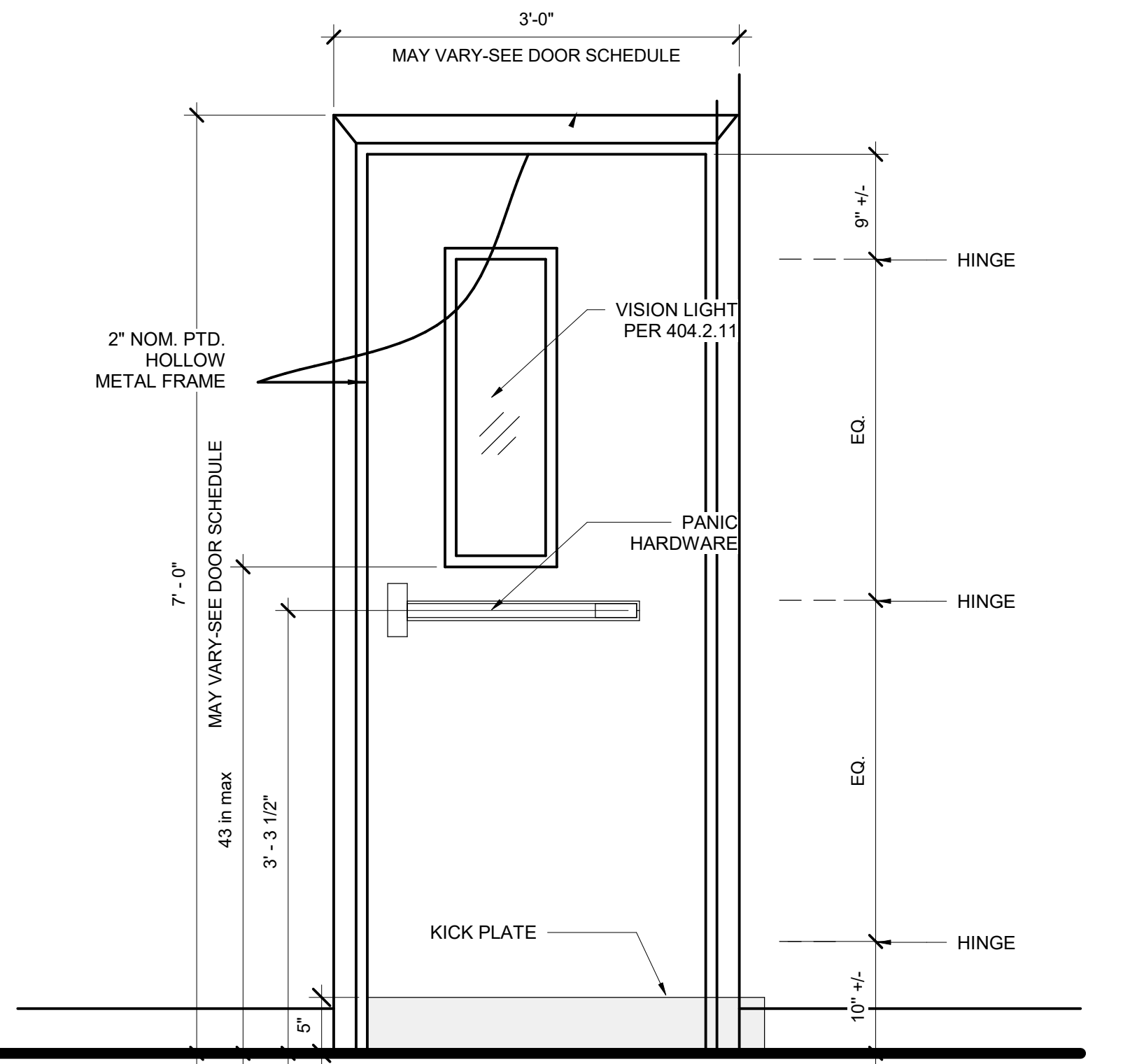
OUTSIDE



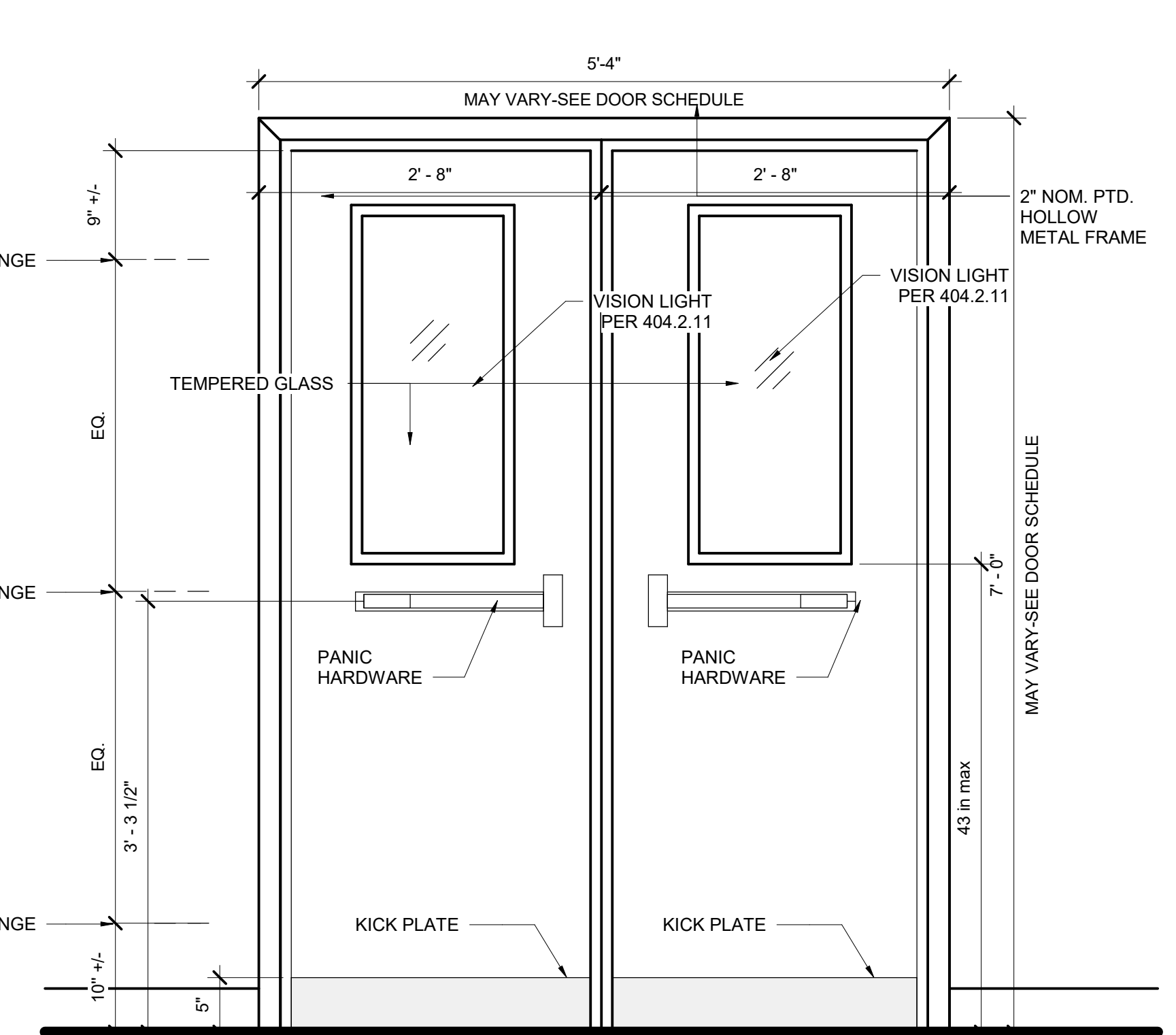
OUTSIDE



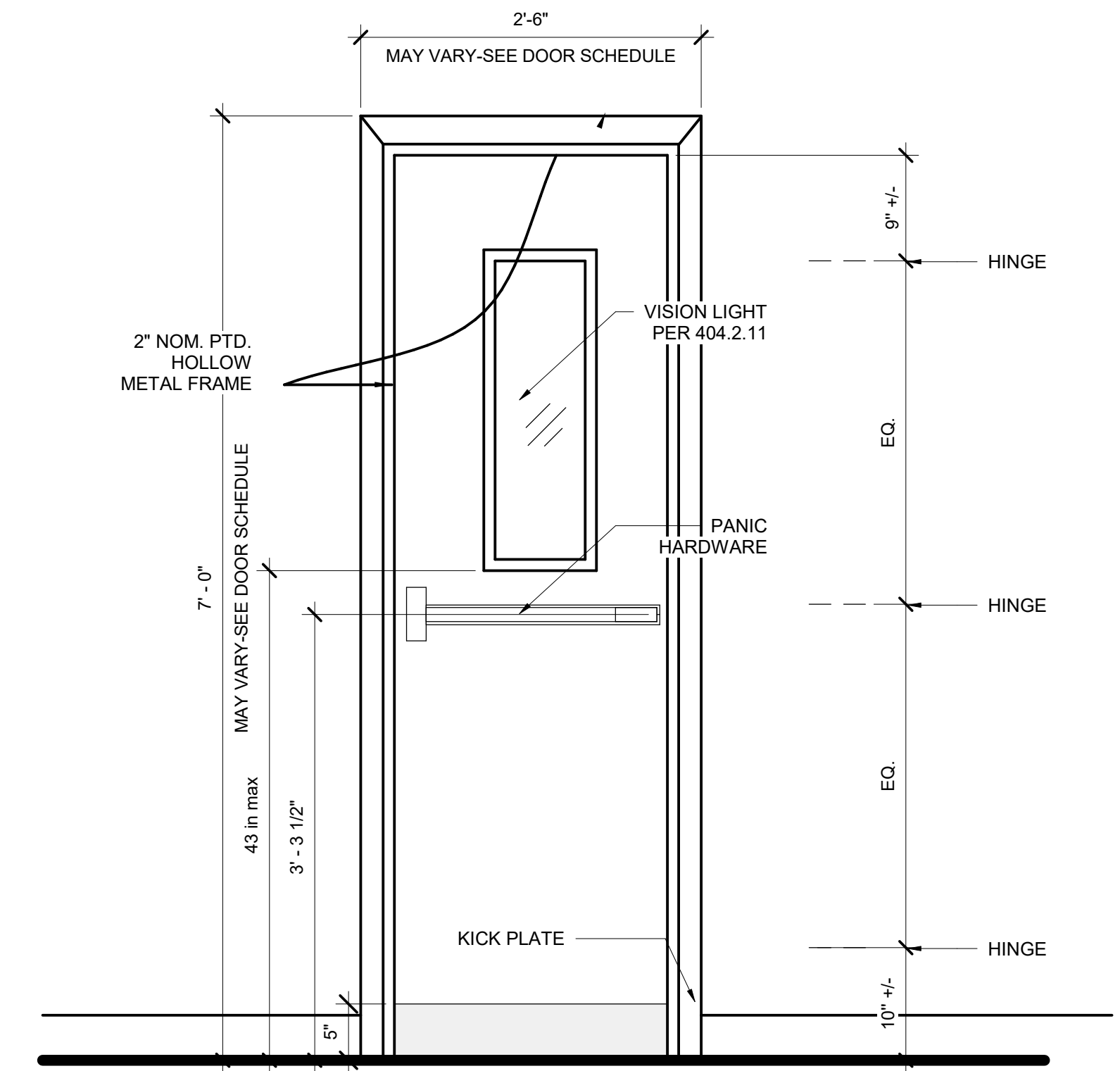
OUTSIDE



INSIDE



INSIDE

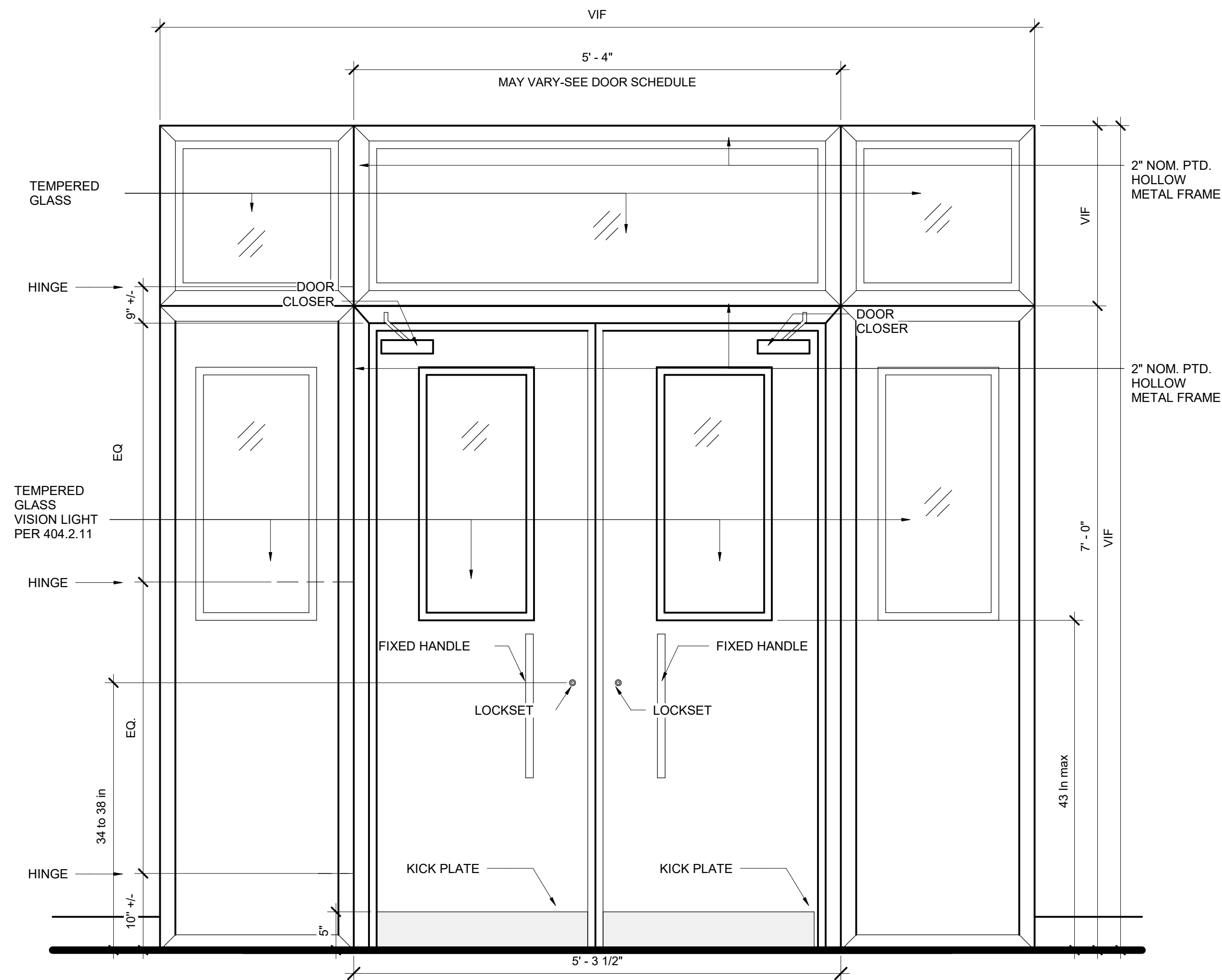


INSIDE

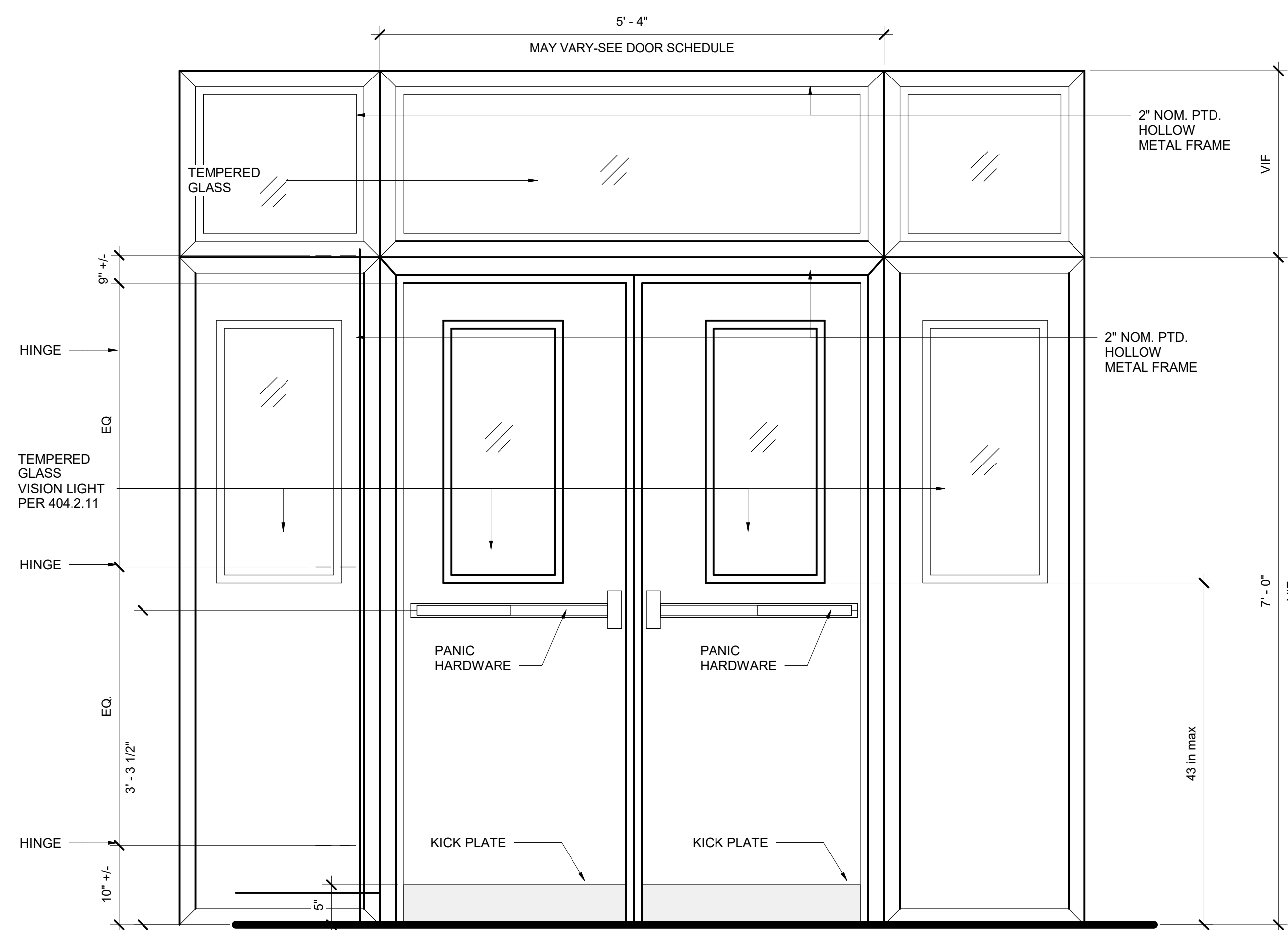
DOOR HARDWARE SET 4

- GENERAL**
1. DOOR HUNG TO THE FRAME WITH HINGES
 2. SECURITY LOCKSET
 3. THRESHOLD NEEDED
 4. DOOR CLOSER

- SPECIFIC CONSIDERATIONS**
1. HEAVY FREQUENCY OF USE
 2. NOT EXPOSED TO WEATHER/CLIMATE (INTERIOR USE)
 3. MATERIAL: TEMPERED GLASS AND ALUMINIUM



OUTSIDE



INSIDE

NOTE:
 1. THE CONTRACTOR MUST VERIFY ALL DIMENSIONS IN THE FIELD PRIOR TO ORDERING AND INSTALLATION.
 2. DOORS SLABS AND FRAMES TO BE REPLACED FOLLOWING THE PROPOSED HARDWARE SET



PLATO MARINAKOS, JR. ARCHITECT, LLC

www.plato-studio.com

107 S 2nd Street
 4th Floor
 Philadelphia, PA 19106
 267-866-0930 OFFICE
 267-866-0931 DIRECT
 plato@plato-studio.com

ISSUED FOR BIDDING
 6/3/24

ARCHITECT SEAL MUST BE IN RED INK
 OWNER

Vision Academy Charter School

ONE CALL #:



SITE SAFETY

It is the responsibility of the general contractor and/or the contractor listed as the licensed entity on the building permit for the municipality to ensure all site safety requirements are in place and followed, prior to, during, and after the commencement of the construction process until they are 100% complete and have received a building certificate of occupancy by governing agencies. They are also responsible for any unsafe conditions caused by or related to their sub-contractors' work. Plato Marinakos, Architect LLC and their professional consultants (associated with these documents) are not responsible for means and methods of construction, and/or site safety, including, but not limited to, osha construction safety requirements, standard construction, job site safety, job site safety training of workers, safe work site organization, safety direction and/or safety engineering of required safety elements. It is the sole responsibility of the licensed contractor to ensure that all site safety measures are in accordance with the governing authorities. Please refer to OSHA website (www.osha.gov) for additional training and information requirements for site safety compliance.

REV	DATE	DESCRIPTION

APPROVAL STAMP



716 EMERSON AVE - SCHOOL
 lansdowne, PA.

DOOR HARDWARE TYPES

Project number	N/A
Date	6/3/2024
Drawn by	Author
Checked by	Checker

D102

Scale 1" = 1'-0"